

# LEF1 Antibody

Catalog No: T55350

Reactivity: Human Mouse Rat

Isotype: Rabbit IgG

Applications: WB IHC ICC/IF IP FC



www.ab-mart.com.cn

400-6123-828

## Information

**UniProt ID:** Q9UJU2

**All Names:** LEF1\_HUMAN; Lymphoid enhancer binding factor 1; TCF1 alpha; TCF10; Transcription factor T cell specific 1 alpha; TCF7L3;

**Form:** Liquid

**Storage instructions:** Store at +4°C short term. Store at -20°C long term. Avoid freeze / thaw cycle.

**Storage buffer:** Rabbit IgG in phosphate buffered saline , pH 7.4, 150mM NaCl, 0.02% sodium azide and 50% glycerol.

**Purity:** Affinity-chromatography

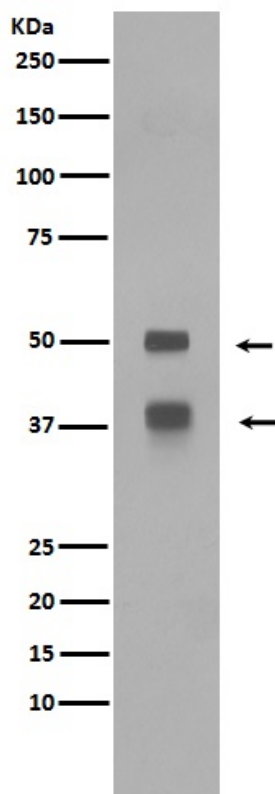
**Molecular Wt.:** 44kDa

## Application

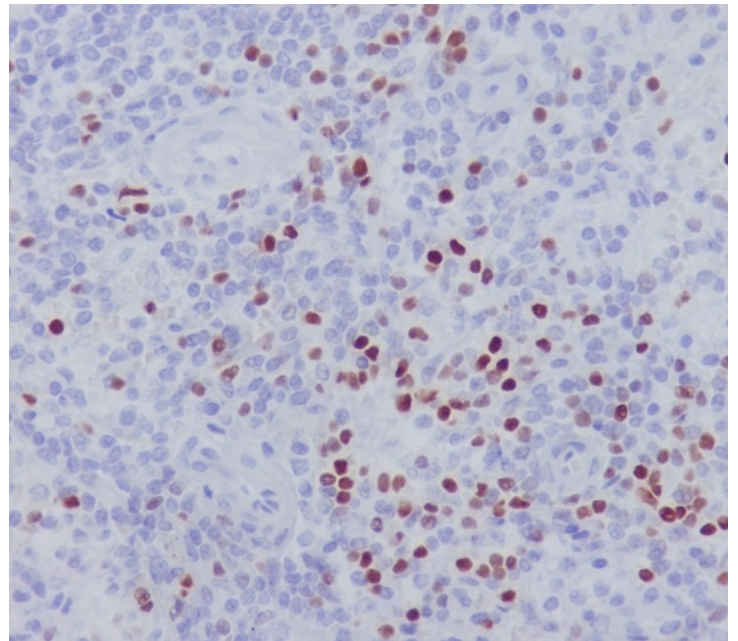
WB: 1:1000~1:2000 IHC: 1:50~1:200 ICC/IF: 1:100~1:500 IP: 1:50 FC: 1:50

## Background

Participates in the Wnt signaling pathway. Activates transcription of target genes in the presence of CTNNB1 and EP300. May play a role in hair cell differentiation and follicle morphogenesis. TLE1, TLE2, TLE3 and TLE4 repress transactivation mediated by LEF1 and CTNNB1. Regulates T-cell receptor alpha enhancer function. Binds DNA in a sequence-specific manner. PIAG antagonizes both Wnt-dependent and Wnt-independent activation by LEF1 (By similarity).



Western blot analysis of LEF1 expression in Jurkat cell lysate.



Immunohistochemical analysis of paraffin-embedded human spleen, using LEF1 Antibody.