

Hsp60 Antibody

Catalog No: T55398

Reactivity: Human Mouse Rat

Isotype: Rabbit IgG

Applications: WB IHC



www.ab-mart.com.cn

400-6123-828

Information

UniProt ID: P10809

All Names: HSPD1; CPN60; GROEL; HLD4; HSP60; HSP65; HuCHA60; SPG13;

Form: Liquid

Storage instructions: Store at +4°C short term. Store at -20°C long term. Avoid freeze / thaw cycle.

Storage buffer: Rabbit IgG in phosphate buffered saline , pH 7.4, 150mM NaCl, 0.02% sodium azide and 50% glycerol.

Purity: Affinity-chromatography

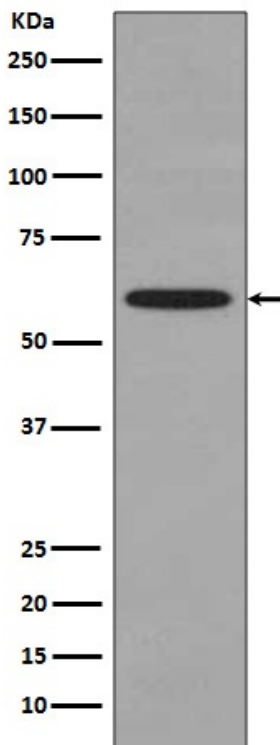
Molecular Wt.: 60kDa

Application

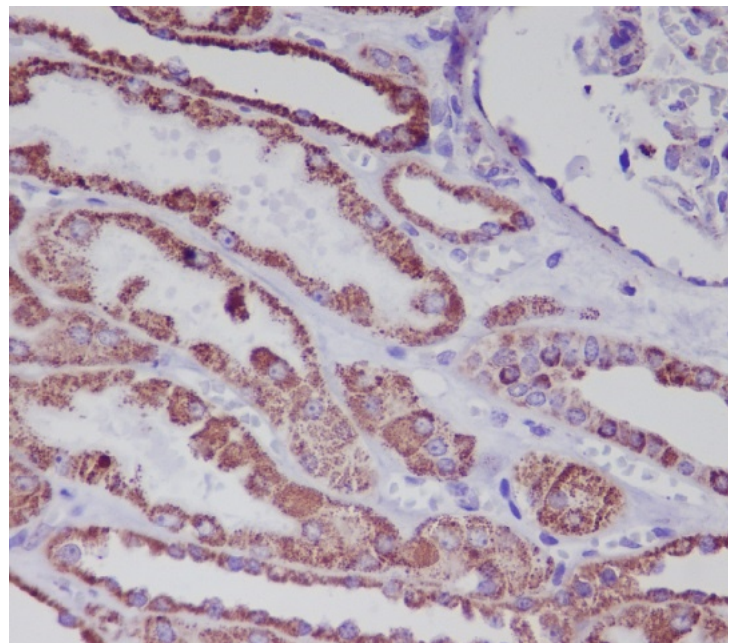
WB 1:500~1:2000 IHC 1:50~1:200

Background

HSP60 Implicated in mitochondrial protein import and macromolecular assembly. May facilitate the correct folding of imported proteins. May also prevent misfolding and promote the refolding and proper assembly of unfolded polypeptides generated under stress conditions in the mitochondrial matrix. Belongs to the chaperonin (HSP60) family. Interacts with HBV protein X and HTLV-1 protein p40tax.



Western blot analysis of Hsp60 expression in HeLa cell lysate.



Immunohistochemical analysis of paraffin-embedded human kidney, using Hsp60 Antibody .