

Cyclin D1 Antibody

Catalog No: T55404

Reactivity: Human Mouse Rat

Isotype: Rabbit IgG

Applications: WB IHC ICC/IF IP



www.ab-mart.com.cn

400-6123-828

Information

UniProt ID: P24385

All Names: CCND1; BCL1; D11S287E; PRAD1; U21B31; Cyclin D1;

Form: Liquid

Storage instructions: Store at +4°C short term. Store at -20°C long term. Avoid freeze / thaw cycle.

Storage buffer: Rabbit IgG in phosphate buffered saline , pH 7.4, 150mM NaCl, 0.02% sodium azide and 50% glycerol.

Purity: Affinity-chromatography

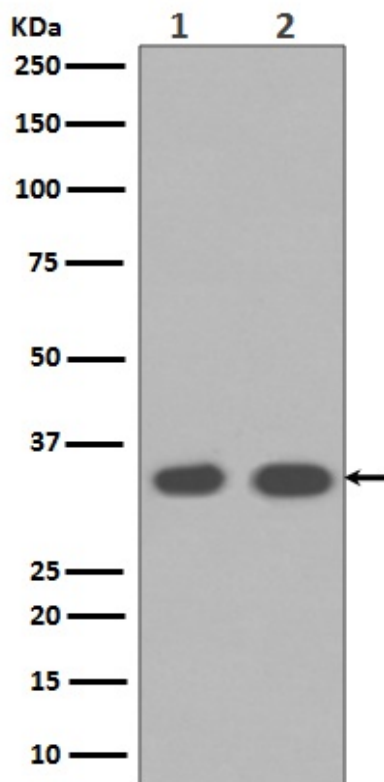
Molecular Wt.: 34kDa

Application

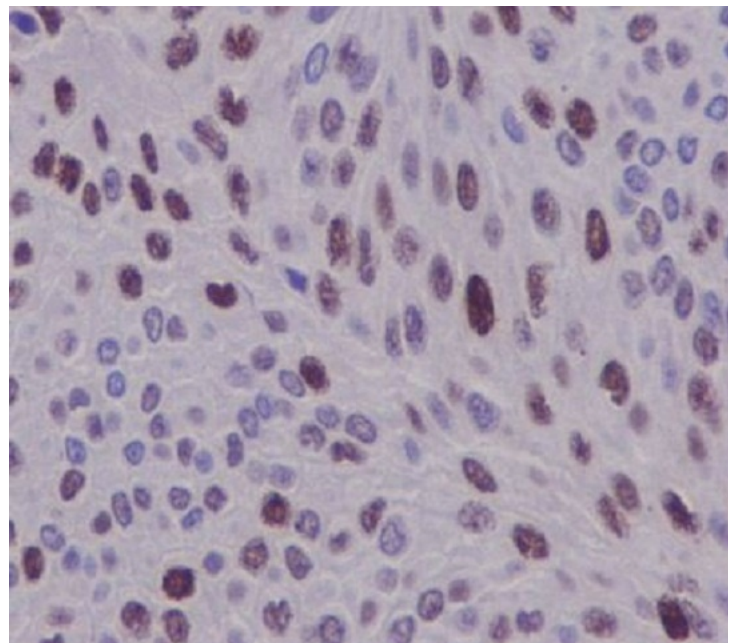
WB 1:1000~1:5000 IHC 1:50~1:200 ICC/IF 1:50~1:100 IP 1:50

Background

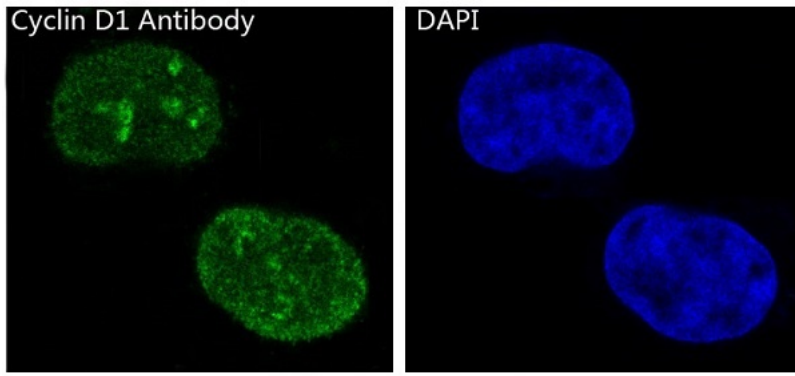
Phosphorylation of RB1 allows dissociation of the transcription factor E2F from the RB/E2F complex and the subsequent transcription of E2F target genes which are responsible for the progression through the G1 phase. Hypophosphorylates RB1 in early G1 phase. Cyclin D-CDK4 complexes are major integrators of various mitogenic and antimitogenic signals.



Western blot analysis of Cyclin D1 expression in (1)MCF-7 cell lysates;(2) LnCaP cell lysates.



Immunohistochemical analysis of paraffin-embedded human bladder, using Cyclin D1 Antibody.



Immunofluorescent analysis of MCF-7 cells, using Cyclin D1 Antibody .