

MAP1LC3A Antibody



Catalog No: T55528

Reactivity: Human Mouse Rat

IsoType: Rabbit IgG

Applications: WB IHC ICC/IF IP FC

www.ab-mart.com.cn

400-6123-828

Information

UniProt ID: Q9H492

All Names: MAP1LC3; LC3; LC3A; MAP1ALC3; MAP1BLC3 ; MAP1LC3A;

Form: Liquid

Storage instructions: Store at +4°C short term. Store at -20°C long term. Avoid freeze / thaw cycle.

Storage buffer: Rabbit IgG in phosphate buffered saline , pH 7.4, 150mM NaCl, 0.02% sodium azide and 50% glycerol.

Purity: Affinity-chromatography

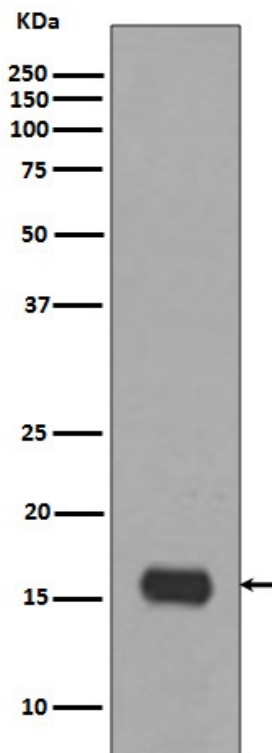
Molecular Wt.: 16kDa

Application

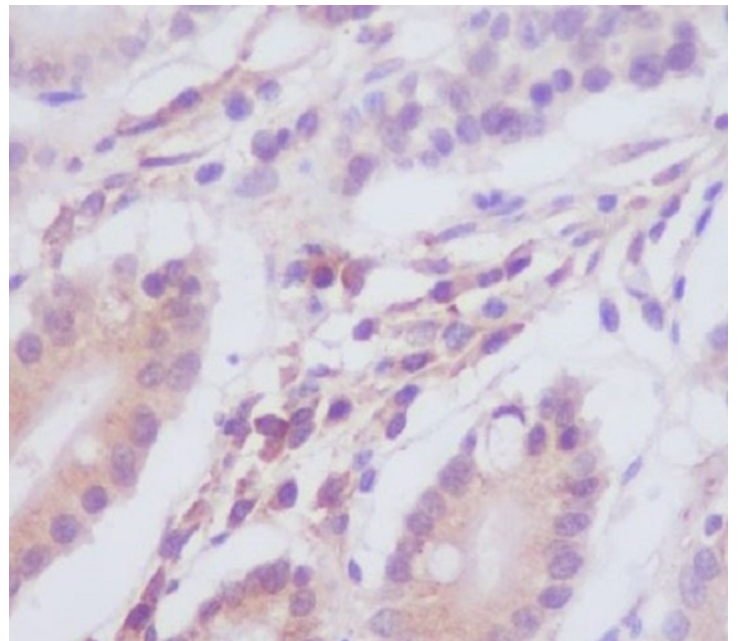
WB 1:500~1:2000 IHC 1:50~1:200 ICC/IF 1:50~1:200 IP 1:50

Background

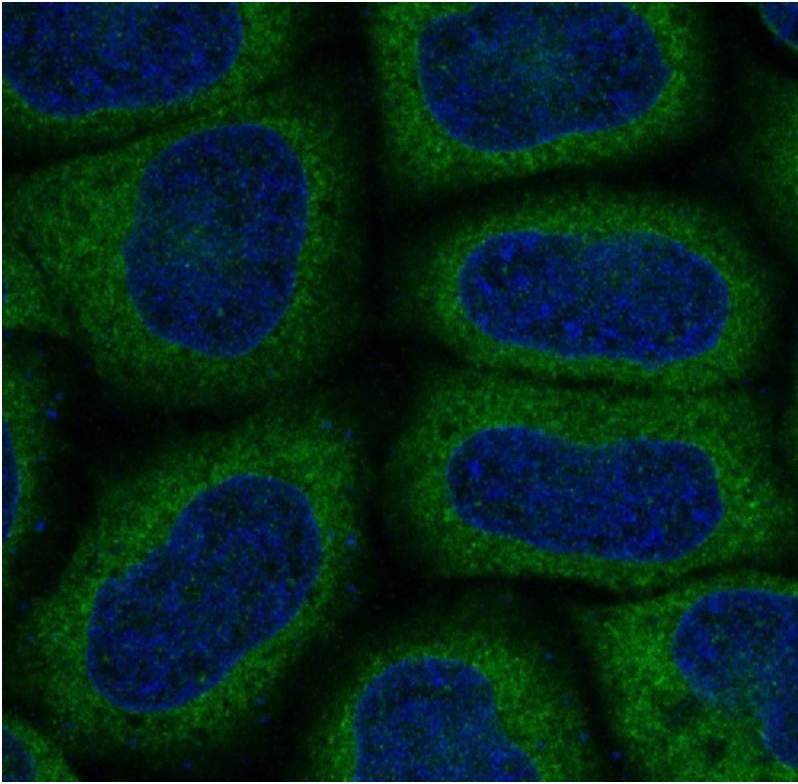
Autophagy marker Light Chain 3 (LC3) was originally identified as a subunit of microtubule-associated proteins 1A and 1B (termed MAP1LC3), and subsequently found to contain similarity to the yeast protein Apg8/Aut7/Cvt5 critical for autophagy. Three human LC3 isoforms (LC3A, LC3B, and LC3C) undergo post-translational modifications during autophagy. Cleavage of LC3 at the carboxy terminus immediately following synthesis yields the cytosolic LC3-I form.



Western blot analysis of MAP1LC3A expression in Hela cell lysate.



Immunohistochemical analysis of paraffin-embedded human stomach, using MAP1LC3A Antibody.



Immunofluorescent analysis of HeLa cells, using MAP1LC3A Antibody .