

# Hsp90 Antibody

Catalog No: T55548

Reactivity: Human Mouse Rat

Isotype: Rabbit IgG

Applications: WB IHC ICC/IF IP FC



www.ab-mart.com.cn

400-6123-828

## Information

**UniProt ID:** P07900/P08238

**All Names:** HSP 90; HSP90A; HSP90B; LAP-2; HSPC1; HSPC2;

**Form:** Liquid

**Storage instructions:** Store at +4°C short term. Store at -20°C long term. Avoid freeze / thaw cycle.

**Storage buffer:** Rabbit IgG in phosphate buffered saline , pH 7.4, 150mM NaCl, 0.02% sodium azide and 50% glycerol.

**Purity:** Affinity-chromatography

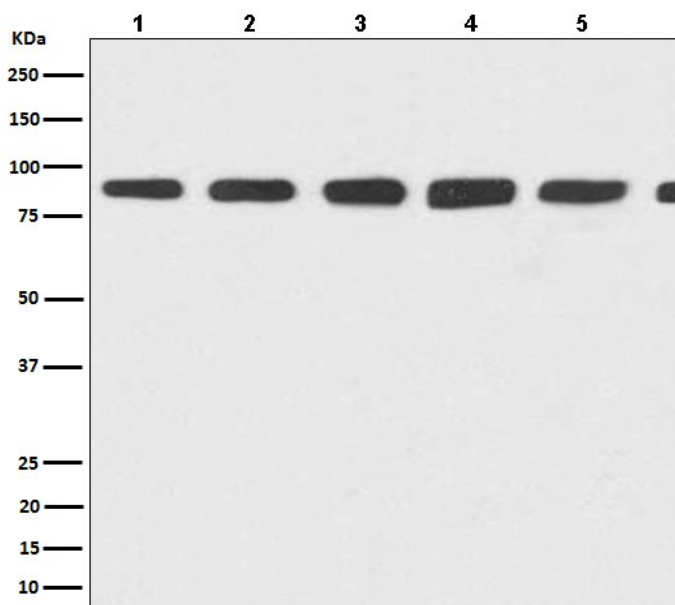
**Molecular Wt.:** 90kDa

## Application

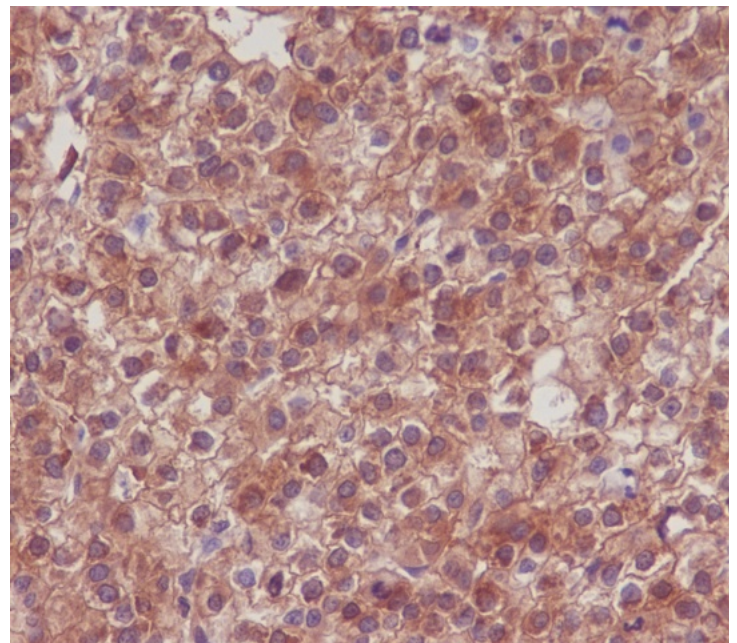
WB 1:5000~1:10000 IHC 1:50~1:200 ICC/IF 1:50~1:200 IP 1:50 FC 1:100

## Background

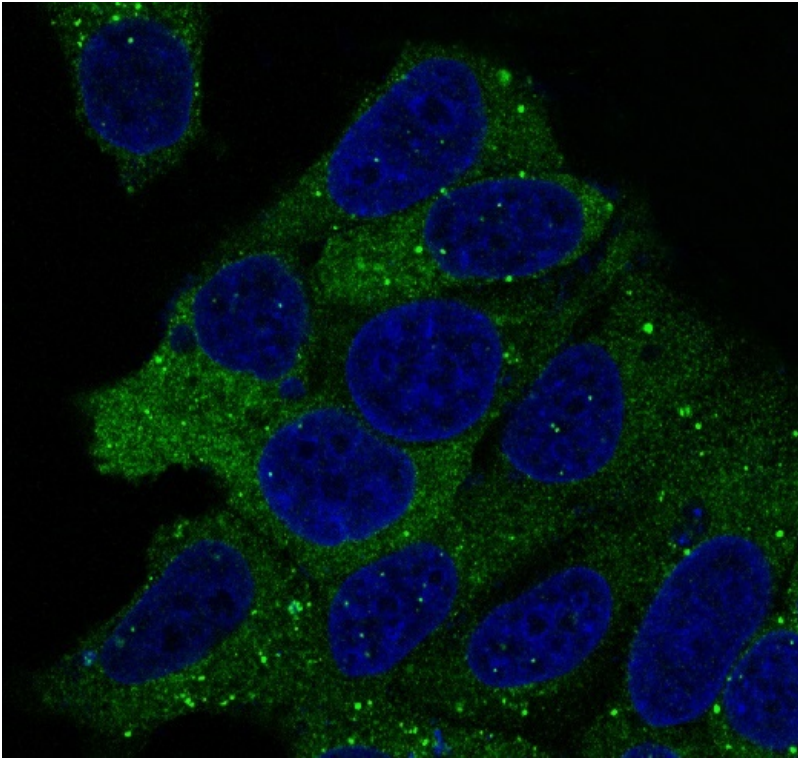
Molecular chaperone that promotes the maturation, structural maintenance and proper regulation of specific target proteins involved for instance in cell cycle control and signal transduction. Undergoes a functional cycle that is linked to its ATPase activity. This cycle probably induces conformational changes in the client proteins, thereby causing their activation.



Western blot analysis of Hsp90 expression in (1) HeLa cell lysate; (2) Jurkat cell lysate; (3) RAW264.7 cell lysate; (4) NIH/3T3 cell lysate; (5) PC-12 cell lysate; (6) C6 cell lysate.



Immunohistochemical analysis of paraffin-embedded human liver carcinoma, using Hsp90 Antibody .



Immunofluorescent analysis of HeLa cells, using Hsp90 Antibody.