

p38 MAPK Antibody

Catalog No: T55600

Reactivity: Human Mouse Rat

Isotype: Rabbit IgG

Applications: WB IHC ICC/IF



www.ab-mart.com.cn

400-6123-828

Information

UniProt ID: Q16539

All Names: CRK1, CSAID binding protein, CSBP, CSBP1, CSBP2, MAP kinase MXI2, MAP kinase p38, MAPK14, MAX-interacting protein 2, MK14, MXI2, Mitogen-activated protein kinase 14;

Form: Liquid

Storage instructions: Store at +4°C short term. Store at -20°C long term. Avoid freeze / thaw cycle.

Storage buffer: Rabbit IgG in phosphate buffered saline , pH 7.4, 150mM NaCl, 0.02% sodium azide and 50% glycerol.

Purity: Affinity-chromatography

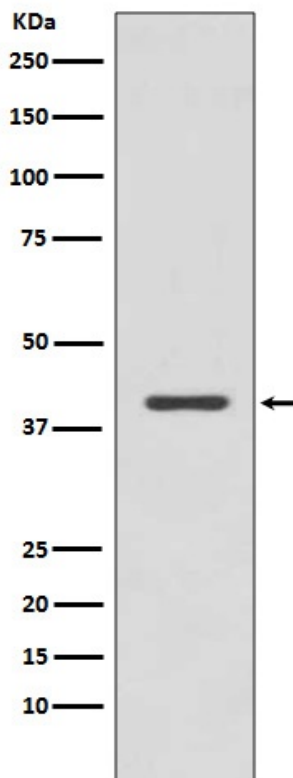
Molecular Wt.: 41kDa

Application

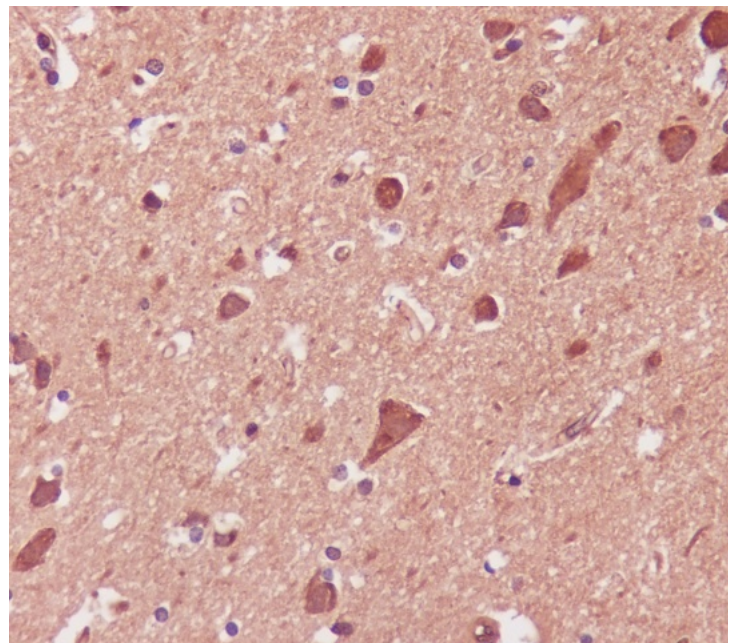
WB 1:500~1:2000 IHC 1:50~1:200 ICC/IF 1:50~1:200

Background

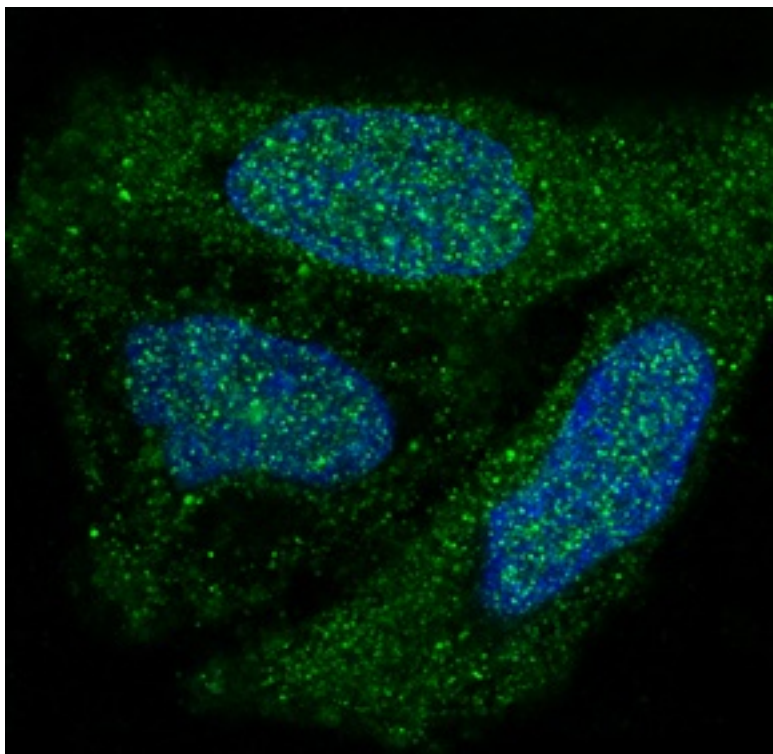
The protein encoded by this gene is a member of the MAP kinase family. MAP kinases act as an integration point for multiple biochemical signals, and are involved in a wide variety of cellular processes such as proliferation, differentiation, transcription regulation and development.



Western blot analysis of p38 MAPK expression in Jurkat cell lysate.



Immunohistochemical analysis of paraffin-embedded human brain, using p38 MAPK Antibody.



Immunofluorescent analysis of HeLa cells, using p38 MAPK Antibody.