

S100A4 Antibody



Catalog No: T55799

Reactivity: Human Mouse Rat

Isotype: Rabbit IgG

Applications: WB IHC ICC/IF IP FC

www.ab-mart.com.cn

400-6123-828

Information

UniProt ID: P26447

All Names: 18A2; 42A; calcium Placental protein; Calcium protein; Calvasculin; CAPL; Fibroblast specific protein 1; FSP1; Metastasin; MTS1; S100 calcium binding protein A4;

Form: Liquid

Storage instructions: Store at +4°C short term. Store at -20°C long term. Avoid freeze / thaw cycle.

Storage buffer: Rabbit IgG in phosphate buffered saline , pH 7.4, 150mM NaCl, 0.02% sodium azide and 50% glycerol.

Purity: Affinity-chromatography

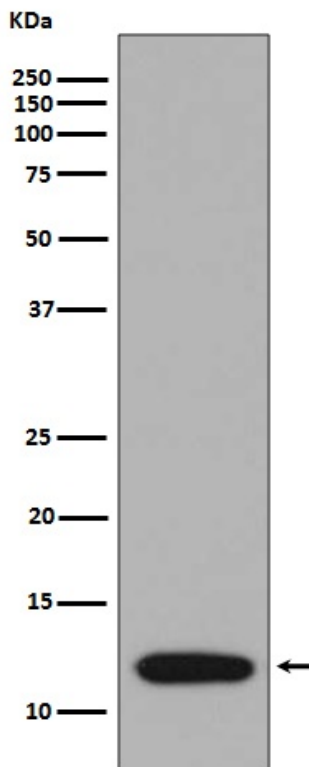
Molecular Wt.: 12kDa

Application

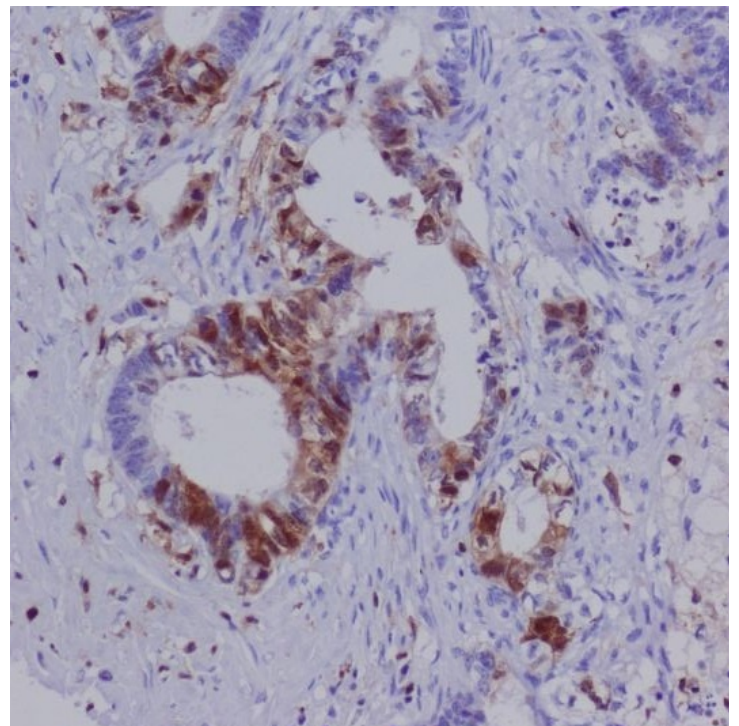
WB 1:500~1:1000 IHC 1:100~1:500 ICC/IF 1:50~1:200 IP 1:40 FC 1:100

Background

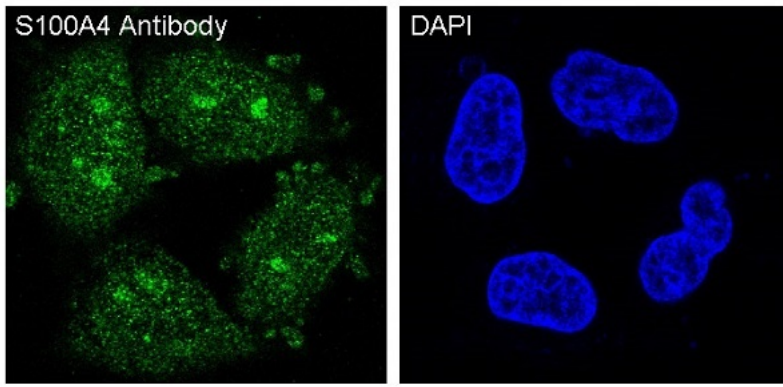
The protein encoded by this gene is a member of the S100 family of proteins containing 2 EF-hand calcium-binding motifs. This protein may function in motility, invasion, and tubulin polymerization. Chromosomal rearrangements and altered expression of this gene have been implicated in tumor metastasis.



Western blot analysis of S100A4 expression in A375 cell lysate.



Immunohistochemical analysis of paraffin-embedded human colon carcinoma, using S100A4 Antibody.



Immunofluorescent analysis of HeLa cells, using S100A4 Antibody.