

Ubiquitin Antibody

Catalog No: T55965

Reactivity: Human Mouse Rat

Isotype: Rabbit IgG

Applications: WB IHC ICC/IF FC



www.ab-mart.com.cn

400-6123-828

Information

UniProt ID: P0CG47

All Names:ubiquitin B; Ubiquitin; UBCEP1; UBCEP2; RPS27A;

Form: Liquid

Storage instructions: Store at +4°C short term. Store at -20°C long term. Avoid freeze / thaw cycle.

Storage buffer:Rabbit IgG in phosphate buffered saline , pH 7.4, 150mM NaCl, 0.02% sodium azide and 50% glycerol.

Purity: Affinity-chromatography

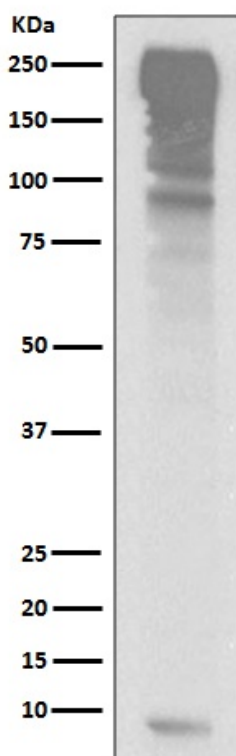
Molecular Wt.: kDa

Application

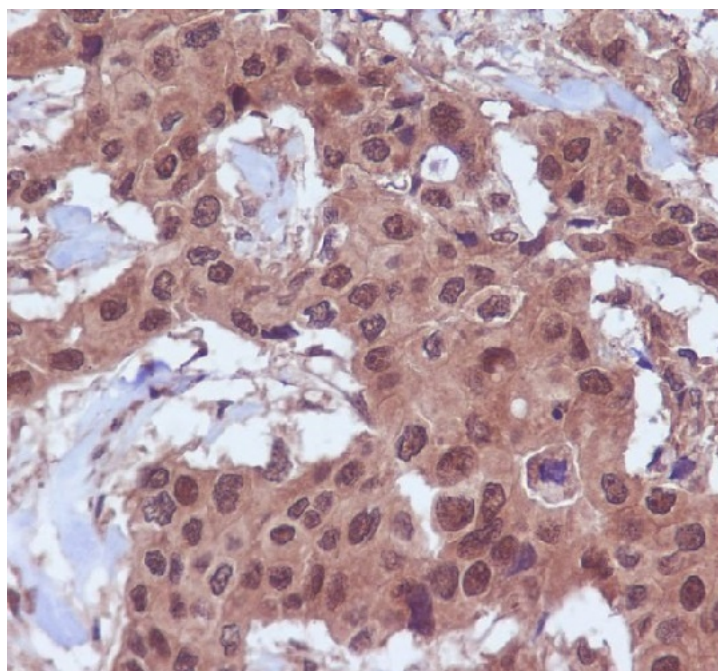
WB 1:500~1:2000 IHC 1:50~1:200 ICC/IF 1:50~1:200 FC 1:50

Background

Plays an important role in the ubiquitin-proteasome pathway. Ubiquitin can be covalently linked to many cellular proteins by the ubiquitination process, which targets proteins for degradation by the 26S proteasome. Three components are involved in the target protein-ubiquitin conjugation process. Ubiquitin is first activated by forming a thiolester complex with the activation component E1; the activated ubiquitin is subsequently transferred to the ubiquitin-carrier protein E2, then from E2 to ubiquitin ligase E3 for final delivery to the epsilon-NH2 of the target protein lysine residue.

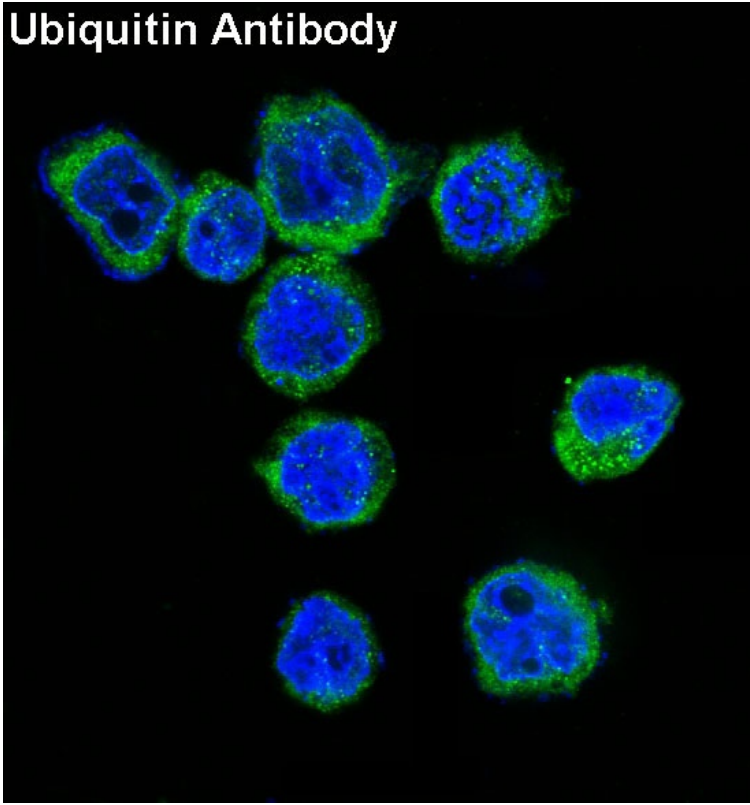


Western blot analysis of Ubiquitin expression in HepG2 cell lysate.



Immunohistochemical analysis of paraffin-embedded human breast cancer, using Ubiquitin Antibody.

Ubiquitin Antibody



Immunofluorescent analysis of Jurkat cells, using Ubiquitin Antibody.