

IKK beta Antibody

Catalog No: T56607

Reactivity: Human Mouse Rat

Isotype: Rabbit IgG

Applications: WB IHC ICC/IF



www.ab-mart.com.cn

400-6123-828

Information

UniProt ID: O14920

All Names: IKK-B; IKK-beta; IKK2; IKKB; IkbKB; NFKB1KB; kinase IKK-beta;

Form: Liquid

Storage instructions: Store at +4°C short term. Store at -20°C long term. Avoid freeze / thaw cycle.

Storage buffer: Rabbit IgG in phosphate buffered saline , pH 7.4, 150mM NaCl, 0.02% sodium azide and 50% glycerol.

Purity: Affinity-chromatography

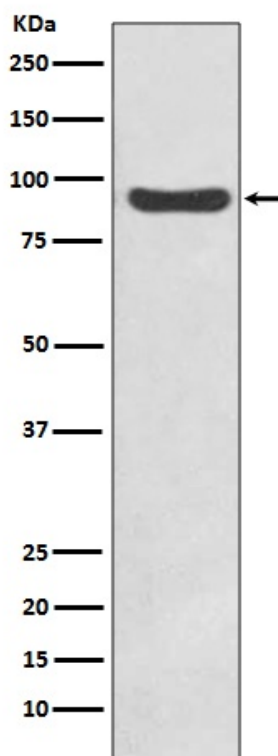
Molecular Wt.: 87kDa

Application

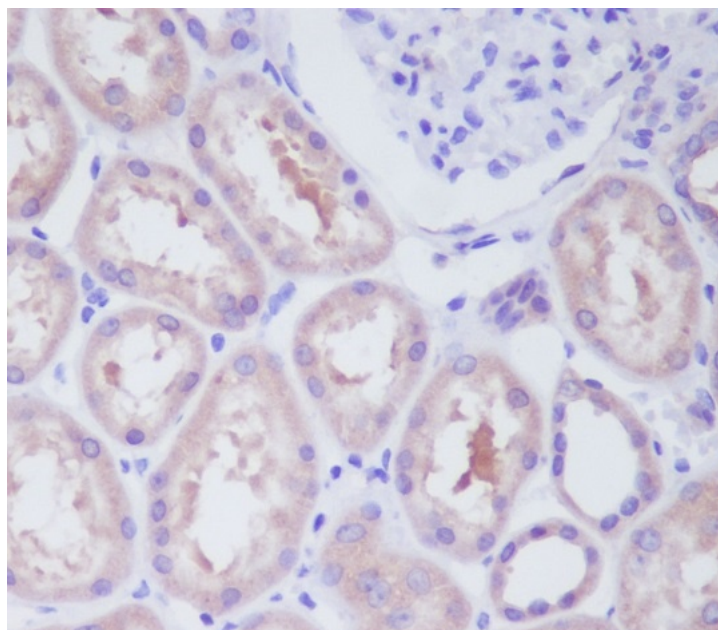
WB 1:500~1:2000 IHC 1:50~1:200 ICC/IF 1:50~1:200

Background

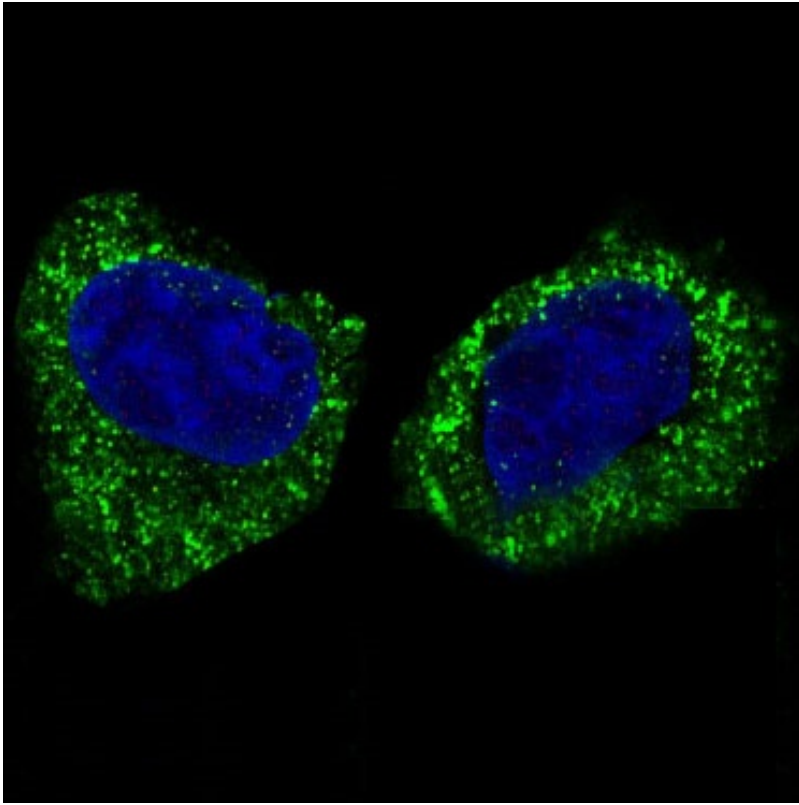
IKK-beta is a kinase of the IKK family. Phosphorylates inhibitors of NF-kappa-B thus leading to the dissociation of the inhibitor/NF-kappa-B complex and ultimately the degradation of the inhibitor. Preferentially found as a heterodimer with IKK-alpha but also as an homodimer.



Western blot analysis of IKK beta expression in HeLa cell lysate.



Immunohistochemical analysis of paraffin-embedded human kidney, using IKK beta Antibody.



Immunofluorescent analysis of HeLa cells, using IKK beta Antibody.