

Ferritin Light Chain Antibody

Catalog No: T56955

Reactivity: Human Mouse Rat

Isotype: Rabbit IgG

Applications: WB IP FC



www.ab-mart.com.cn

400-6123-828

Information

UniProt ID: P02792

All Names: Ferritin L chain; Ferritin L subunit; Ferritin light chain; Ferritin light polypeptide; ferritin light polypeptide like 3; FTL; LFTD; NBIA 3;

Form: Liquid

Storage instructions: Store at +4°C short term. Store at -20°C long term. Avoid freeze / thaw cycle.

Storage buffer: Rabbit IgG in phosphate buffered saline , pH 7.4, 150mM NaCl, 0.02% sodium azide and 50% glycerol.

Purity: Affinity-chromatography

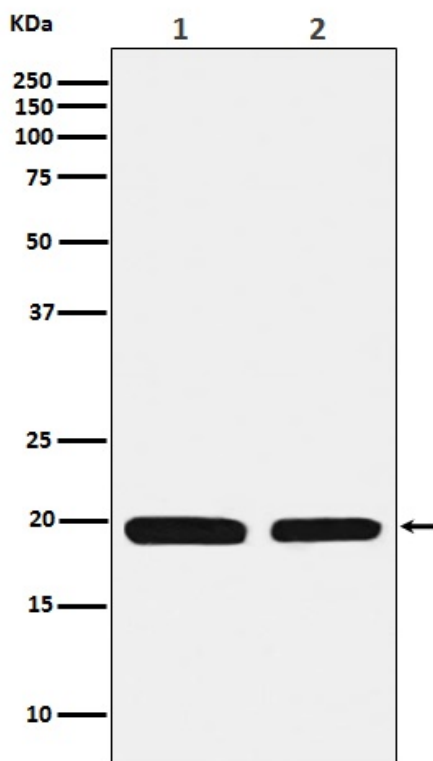
Molecular Wt.: 20kDa

Application

WB 1:1000~1:5000 IP 1:50 FC 1:100

Background

Stores iron in a soluble, non-toxic, readily available form. Important for iron homeostasis. Iron is taken up in the ferrous form and deposited as ferric hydroxides after oxidation. Also plays a role in delivery of iron to cells. Mediates iron uptake in capsule cells of the developing kidney.



Western blot analysis of Ferritin Light Chain expression in (1) HepG2 cell lysate; (2) Mouse liver lysate.