

T58113

CBX4 Antibody



Order 021-34695924

orders@ab-mart.com

Support 400-6123-828

support1@ab-mart.com

Web www.ab-mart.com.cn

☐ 100μl;50μl

Background:

E3 SUMO-protein ligase which facilitates SUMO1 conjugation by UBE2I. Component of the Polycomb group (PcG) multiprotein PRC1 complex, a complex required to maintain the transcriptionally repressive state of many genes, including Hox genes, throughout development.

Alternative Name:

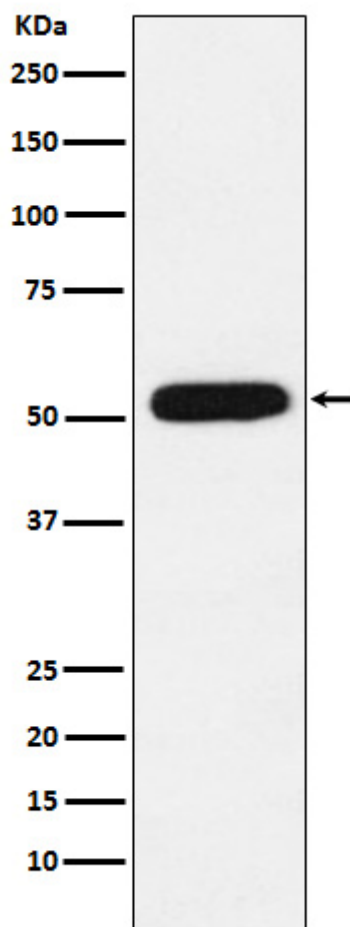
E3 SUMO-protein ligase CBX4 (EC 2.3.2.-) (Chromobox protein homolog 4) (Polycomb 2 homolog) (Pc2) (hPc2) CBX4

Reactivity : Human Mouse Rat

Application : WB

Application Image

WB



Western blot analysis of CBX4 expression in 293T cell lysate.

Recommended Dilution : WB 1:500~1:2000

Mol Weight : 50kDa

Gene Symbol : CBX4

Uniprot : o00257

Uniprot link:

<https://www.uniprot.org/uniprotkb/o00257>

Immunogen:

A synthesized peptide derived from human CBX4

Source : Rabbit

Clonality : Monoclonal

Isotype : Rabbit IgG

Specificity:

CBX4 Antibody detects endogenous levels of total CBX4

Subcellular location : Nucleus localization

Research Area : chromatin organization

Purification : Affinity-chromatography

Buffer:

PBS, pH 7.4, 150mM NaCl, 0.02% sodium azide and 50% glycerol

Storage:

Store at +4°C short term. Store at -20°C long term. Avoid freeze / thaw cycle.