

# MDH1 Antibody

Catalog No: T58186

Reactivity: Human Mouse Rat

IsoType: Rabbit IgG

Applications: WB ICC/IF IP FC



[www.ab-mart.com.cn](http://www.ab-mart.com.cn)

400-6123-828

## Information

**UniProt ID:** P40925

**All Names:** MDH s; mdh1; MDHA; MDHs; MOR2;

**Form:** Liquid

**Storage instructions:** Store at +4°C short term. Store at -20°C long term. Avoid freeze / thaw cycle.

**Storage buffer:** Rabbit IgG in phosphate buffered saline , pH 7.4, 150mM NaCl, 0.02% sodium azide and 50% glycerol.

**Purity:** Affinity-chromatography

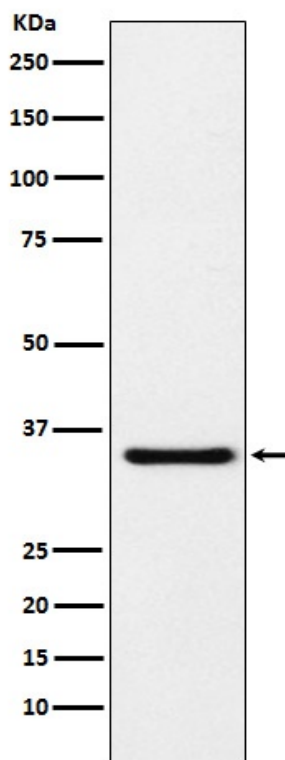
**Molecular Wt.:** 36kDa

## Application

WB 1:1000~1:5000 ICC/IF 1:50~1:200 IP 1:50 FC 1:30

## Background

Belongs to the LDH/MDH superfamily. MDH type 2 family.



Western blot analysis of MDH1 expression in HeLa cell lysate.