

**T58636**

**CCL19 Antibody**



**Order** 021-34695924

orders@ab-mart.com

**Support** 400-6123-828

support1@ab-mart.com

**Web** www.ab-mart.com.cn

☐ 100μl;50μl

### Background:

May play a role not only in inflammatory and immunological responses but also in normal lymphocyte recirculation and homing. May play an important role in trafficking of T-cells in thymus, and T-cell and B-cell migration to secondary lymphoid organs.

### Alternative Name:

C-C motif chemokine 19 (Beta-chemokine exodus-3) (CK beta-11) (Epstein-Barr virus-induced molecule 1 ligand chemokine) (EBI1 ligand chemokine) (ELC) (Macrophage inflammatory protein 3 beta) (MIP-3-beta) (Small-inducible cytokine A19) CCL19 ELC MIP3B SCYA19

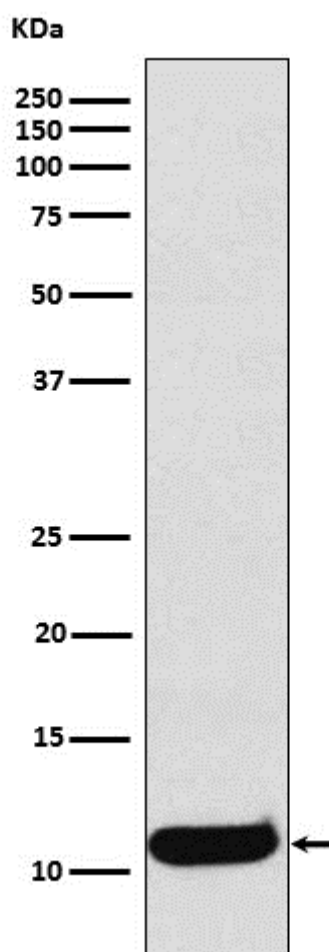
**Reactivity :** Human

**Predicted Reactivity :** Monkey

**Application :** WB,FCM

### Application Image

WB



Western blot analysis of CCL19 expression in Human Macrophage Inflammatory Protein 3 beta recombinant protein lysate.

**Recommended Dilution :** WB 1:1000~1:5000 FC 1:100

**Mol Weight :** 11kDa

**Gene Symbol :** CCL19 ELC MIP3B SCYA19

**Uniprot :** q99731

**Uniprot link:**

<https://www.uniprot.org/uniprotkb/q99731>

**Immunogen:**

A synthesized peptide derived from human CCL19

**Source :** Rabbit

**Clonality :** Monoclonal

**Isotype :** Rabbit IgG

**Specificity:**

CCL19 Antibody detects endogenous levels of total CCL19

**Research Area:**

Inflammatory response #G protein-coupled receptor signaling pathway

**Purification :** Affinity-chromatography

**Buffer:**

PBS, pH 7.4, 150mM NaCl, 0.02% sodium azide and 50% glycerol

**Storage:**

Store at +4°C short term. Store at -20°C long term. Avoid freeze / thaw cycle.