

# M6PR Antibody

Catalog No: T58686

Reactivity: Human Mouse Rat

Isotype: Rabbit IgG

Applications: WB ICC/IF FC



[www.ab-mart.com.cn](http://www.ab-mart.com.cn)

400-6123-828

## Information

**UniProt ID:** P20645

**All Names:** CD MPR; M6pr; Man6PR; MPR46; MPRD; SMPR;

**Form:** Liquid

**Storage instructions:** Store at +4°C short term. Store at -20°C long term. Avoid freeze / thaw cycle.

**Storage buffer:** Rabbit IgG in phosphate buffered saline , pH 7.4, 150mM NaCl, 0.02% sodium azide and 50% glycerol.

**Purity:** Affinity-chromatography

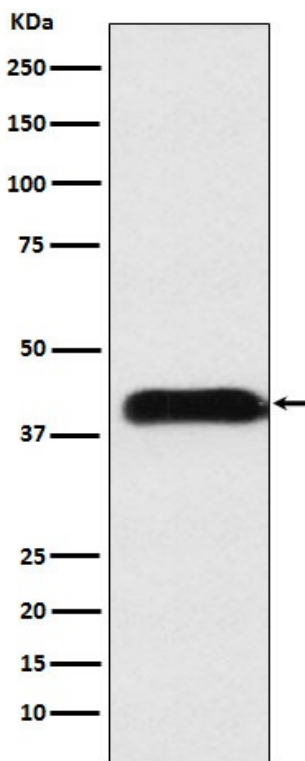
**Molecular Wt.:** 42kDa

## Application

WB 1:500~1:2000 ICC/IF 1:50~1:200 FC 1:50

## Background

Transport of phosphorylated lysosomal enzymes from the Golgi complex and the cell surface to lysosomes. Lysosomal enzymes bearing phosphomannosyl residues bind specifically to mannose-6-phosphate receptors in the Golgi apparatus and the resulting receptor-ligand complex is transported to an acidic prelysosomal compartment where the low pH mediates the dissociation of the complex.



Western blot analysis of M6PR expression in A549 cell lysate.