

P60039

beta Tubulin Antibody

- 50ul
- 100 uL



Order 021-34695924
orders@ab-mart.com
Support 400-6123-828
support1@ab-mart.com
Web www.ab-mart.com.cn

Description:

Tubulin is the major constituent of microtubules. It binds two moles of GTP, one at an exchangeable site on the beta chain and one at a non-exchangeable site on the alpha-chain.

Uniprot:P07437

Alternative Names:

Beta 4 tubulin; Beta 5 tubulin; Beta1 tubulin; Tubulin beta chain; Tubulin beta class I;

Species Reactivity:Human Mouse Rat

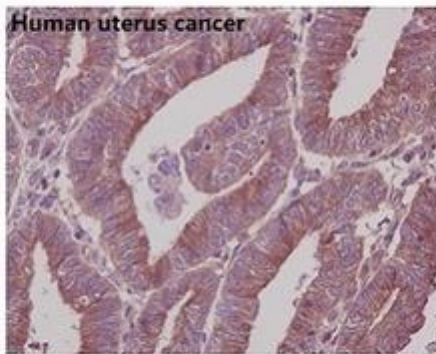
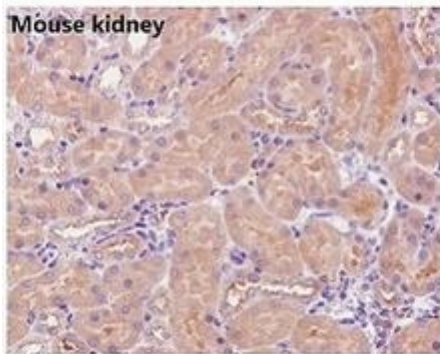
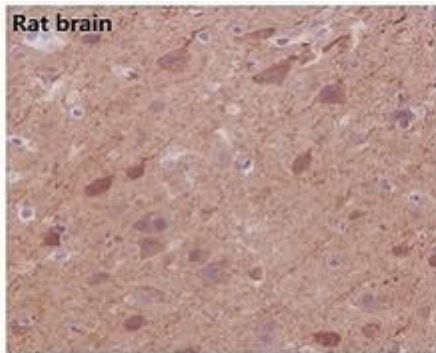
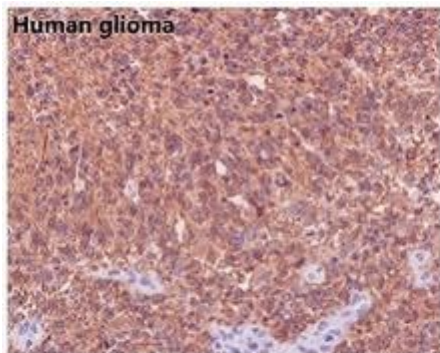
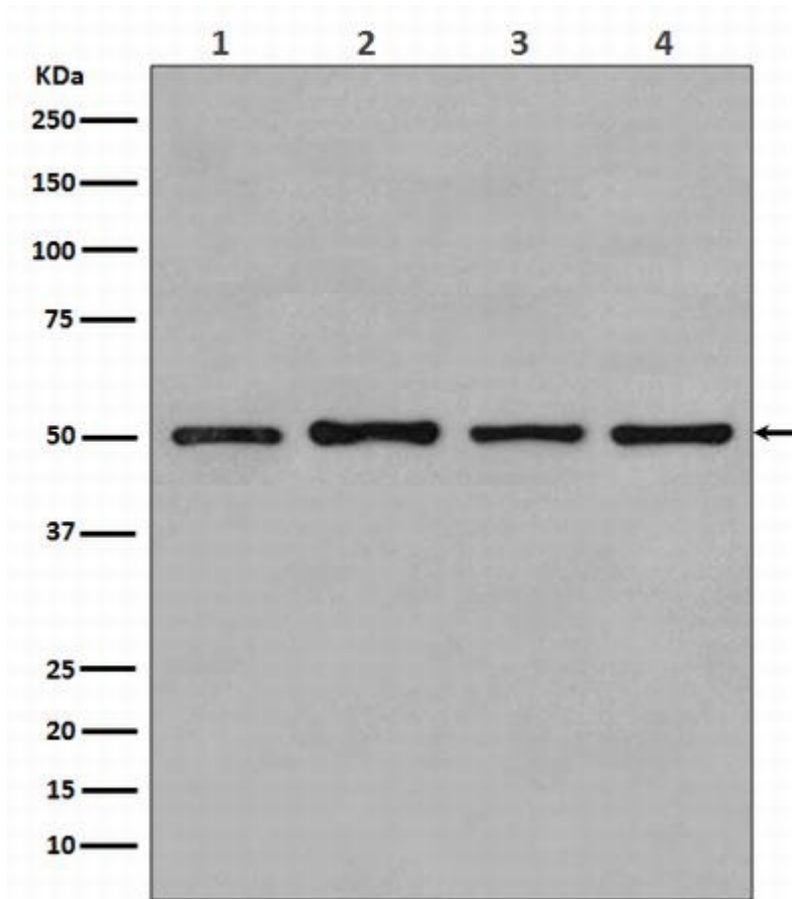
Source:Rabbit

Mol Weight:50kDa

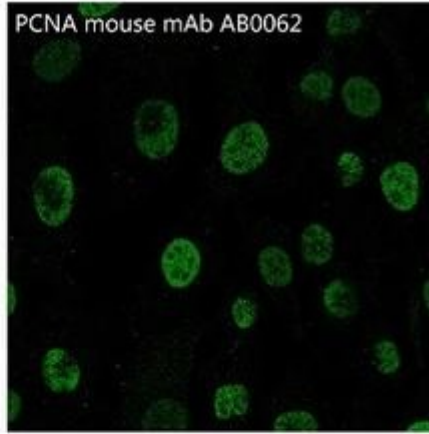
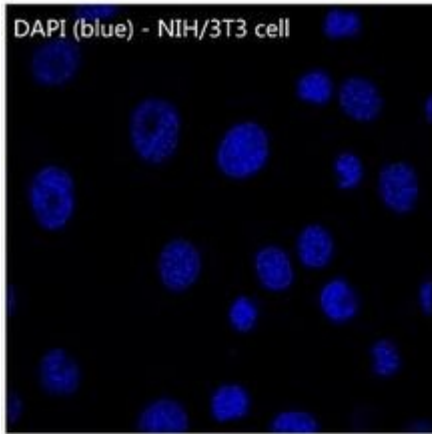
Storage Condition: Store at -20 °C. Stable for 12 months from date of receipt.

Application:

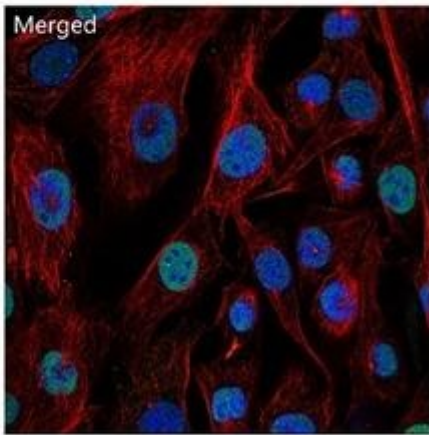
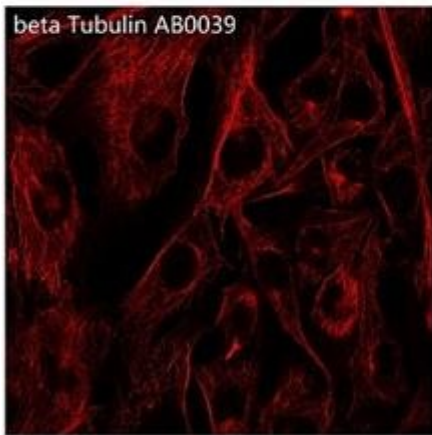
WB 1:3000~1:10000 IHC 1:50~1:200 ICC/IF 1:50~1:200 FC 1:100



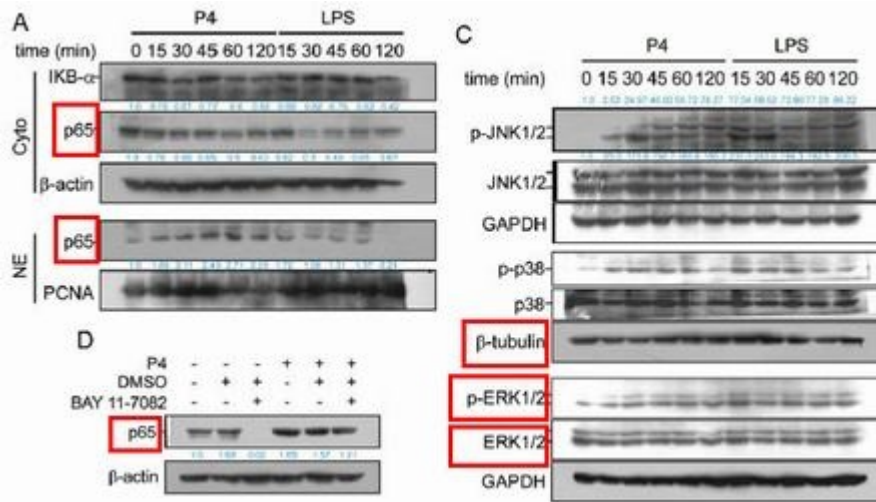
Immunohistochemical analysis of paraffin-embedded (1) Human glioma; (2) Rat brain; (3) Mouse kidney; (4) Human uterus cancer, using beta Tubulin Antibody.



Immunofluorescent analysis of NIH/3T3 cells, using beta Tubulin Antibody .



Remifentanyl upregulates hepatic IL-18 binding protein (IL-18BP) expression through transcriptional control. -Laboratory Investigation



Polysaccharides from *Nostoc commune* Vaucher activate macrophages via NF- κ B and AKT/JNK1/2 pathways to suppress colorectal cancer growth in vivo. -Food & Function