

P60054

## Lamin B1 Antibody

- 50ul
- 100 uL



**Order** 021-34695924  
orders@ab-mart.com  
**Support** 400-6123-828  
support1@ab-mart.com  
**Web** www.ab-mart.com.cn

### Description:

The nuclear lamina consists of a two-dimensional matrix of proteins located next to the inner nuclear membrane. The lamin family of proteins make up the matrix and are highly conserved in evolution. During mitosis, the lamina matrix is reversibly disassembled as the lamin proteins are phosphorylated. Lamin proteins are thought to be involved in nuclear stability, chromatin structure and gene expression.

**Uniprot:**P20700

### Alternative Names:

LMN; ADLD; LMN2; LMNB; Lamin B1;

**Species Reactivity:**Human Mouse Rat

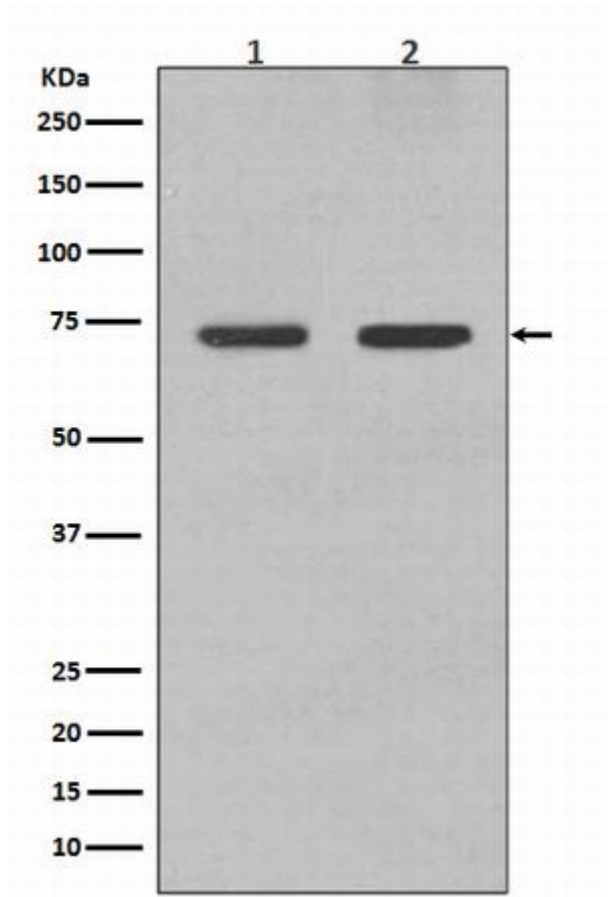
**Source:**Rabbit

**Mol Weight:**70kDa

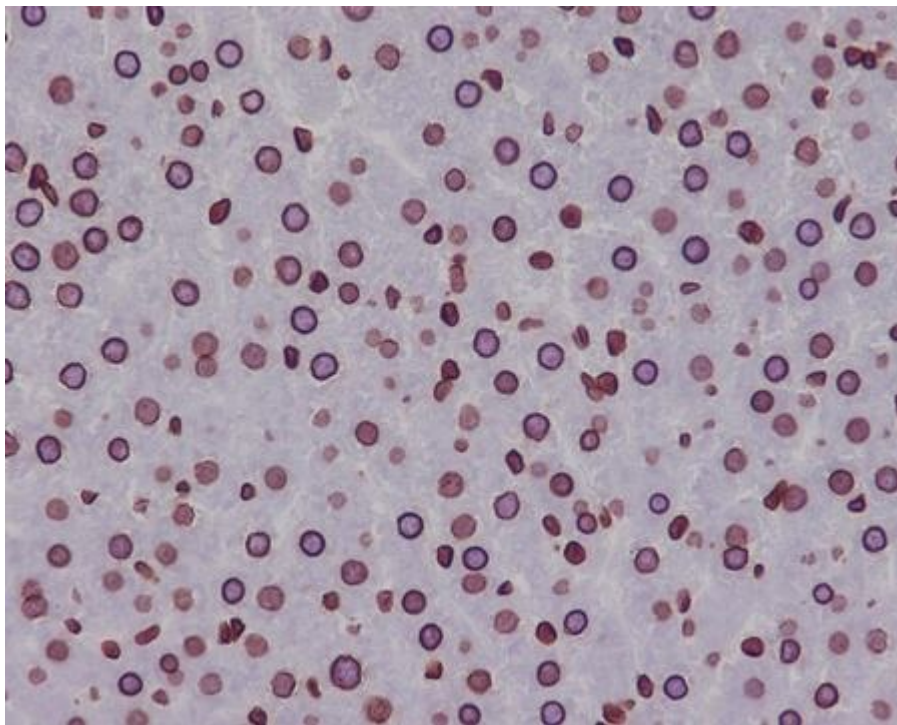
**Storage Condition:** Store at -20 °C. Stable for 12 months from date of receipt.

### Application:

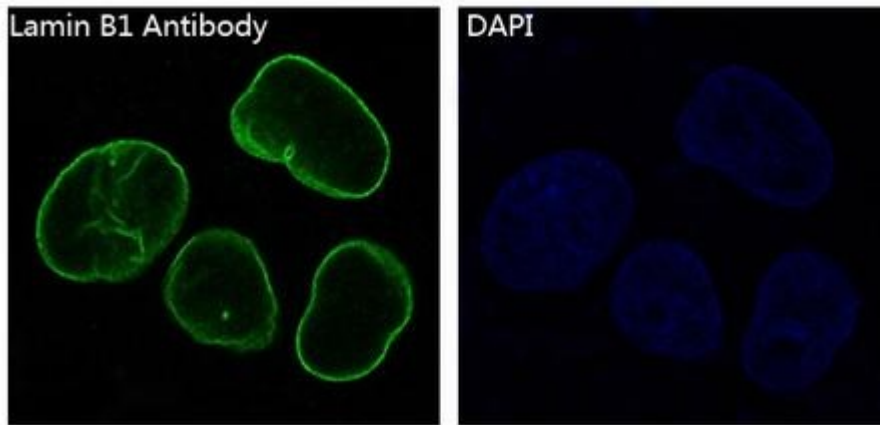
WB 1:3000~1:10000 IHC 1:50~1:200 ICC/IF 1:50~1:200 IP 1:50



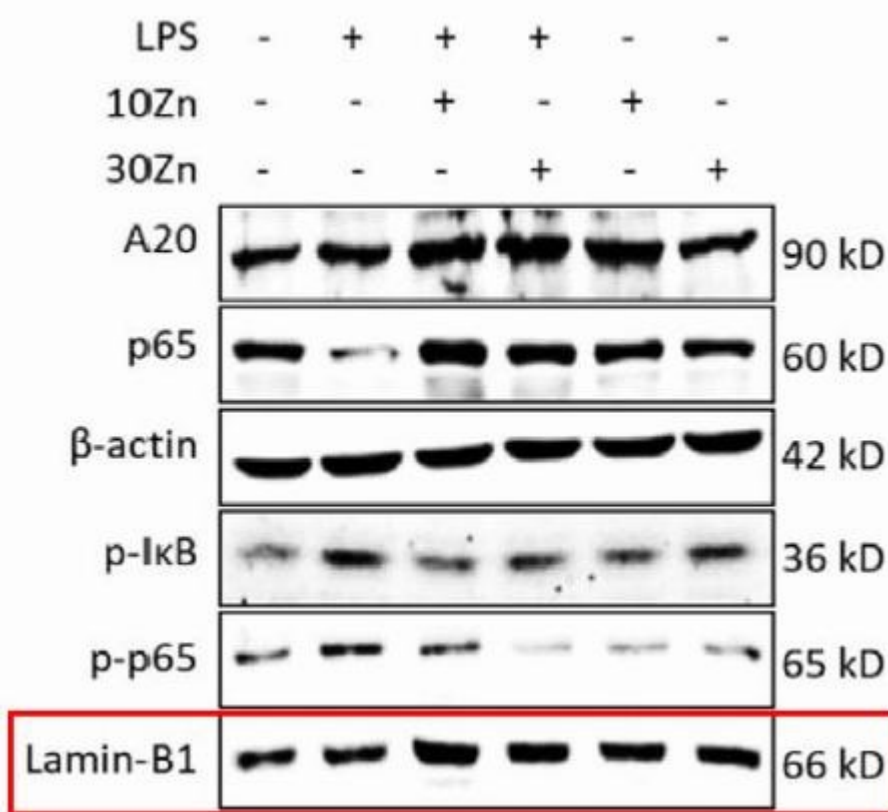
Western blot analysis of Lamin B1 expression in (1) HeLa cell lysate; (2) Jurkat cell lysate; (3) Mouse brain lysate; (4) Rat heart lysate with Lamin B1 Antibody.



Immunohistochemical analysis of paraffin-embedded rat liver, using Lamin B1 Antibody.



Immunofluorescent analysis of HepG2 cells, using Lamin B1 Antibody.



Zinc inhibited LPS-induced inflammatory responses by upregulating A20 expression in microglia BV2 cells. - Journal of Affective Disorders