

T510271

Erlin-2 Antibody



Order 021-34695924
orders@ab-mart.com
Support 400-6123-828
support1@ab-mart.com
Web www.ab-mart.com.cn

100μl;50μl

Background:

Component of the ERLIN1/ERLIN2 complex which mediates the endoplasmic reticulum-associated degradation (ERAD) of inositol 1,4,5-trisphosphate receptors (IP3Rs). Also involved in ITPR1 degradation by the ERAD pathway.

Alternative Name:

Erlin-2 (Endoplasmic reticulum lipid raft-associated protein 2) (Stomatin-prohibitin-flotillin-Hfic/K domain-containing protein 2) (SPFH domain-containing protein 2) ERLIN2 C8orf2 SPFH2 UNQ2441/PRO5003/PRO9924

Reactivity : Human Mouse

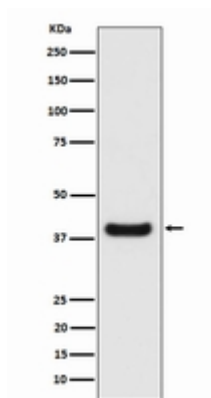
Predicted Reactivity:

Monkey,Dog,Pig,Cat,Horse,Sheep,Bovine,Rabbit,Hamster,Guinea Pig,Chicken,Xenopus

Application : WB,IHC,ICC/IF

Application Image

WB



Western blot analysis of Erlin-2 expression in HeLa cell lysate.

Recommended Dilution:

WB 1:500~1:2000 IHC 1:50~1:200 ICC/IF 1:50~1:200

Mol Weight : 38kDa

Gene Symbol:

ERLIN2 C8orf2 SPFH2 UNQ2441/PRO5003/PRO9924

Uniprot : O94905

Uniprot link:

<https://www.uniprot.org/uniprotkb/o94905>

Immunogen :

Source : Rabbit

Clonality : Monoclonal

Isotype : Rabbit

Subcellular location : Transmembrane

Research Area : Cholesterol metabolism

Buffer:

PBS, pH 7.4, 150mM NaCl, 0.02% sodium azide and 50% glycerol

Storage:

Store at -20 °C. Stable for 12 months from date of receipt.