

**T510354**

**ARPC2 Antibody**



**Order** 021-34695924  
orders@ab-mart.com  
**Support** 400-6123-828  
support1@ab-mart.com  
**Web** www.ab-mart.com.cn

100μl;50μl

### Background:

Functions as actin-binding component of the Arp2/3 complex which is involved in regulation of actin polymerization and together with an activating nucleation-promoting factor (NPF) mediates the formation of branched actin networks. Seems to contact the mother actin filament.

### Alternative Name:

Actin-related protein 2/3 complex subunit 2 (Arp2/3 complex 34 kDa subunit) (p34-ARC) ARPC2 ARC34 PRO2446

**Reactivity :** Human Mouse Rat

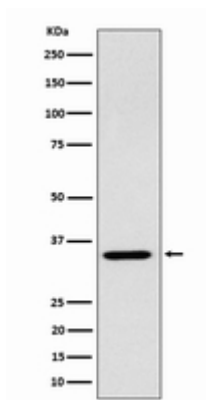
### Predicted Reactivity:

Monkey,Dog,Pig,Cat,Horse,Sheep,Rabbit,Hamster,Guinea Pig,Chicken,Xenopus,Zebrafish

**Application :** WB,IHC,ICC/IF,IP,FCM

### Application Image

WB



Western blot analysis of ARPC2 expression in 293 cell lysate.

### Recommended Dilution:

WB 1:500~1:2000 IHC 1:50~1:200 ICC/IF 1:50~1:200 IP 1:50 FC 1:50

**Mol Weight :** 34kDa

**Gene Symbol :** ARPC2 ARC34 PRO2446

**Uniprot :** O15144

**Uniprot link:**

<https://www.uniprot.org/uniprotkb/o15144>

**Immunogen :**

**Source :** Rabbit

**Clonality :** Monoclonal

**Isotype :** Rabbit

**Buffer:**

PBS, pH 7.4, 150mM NaCl, 0.02% sodium azide and 50% glycerol

**Storage:**

Store at -20 °C. Stable for 12 months from date of receipt.