

T58792

PDE2A Antibody

Abmart

Order 021-34695924
orders@ab-mart.com
Support 400-6123-828
support1@ab-mart.com
Web www.ab-mart.com.cn

100μl;50μl

Background:

Cyclic nucleotide phosphodiesterase with a dual-specificity for the second messengers cAMP and cGMP, which are key regulators of many important physiological processes.

Alternative Name:

cGMP-dependent 3',5'-cyclic phosphodiesterase (EC 3.1.4.17) (Cyclic GMP-stimulated phosphodiesterase) (CGS-PDE) (cGSPDE) PDE2A

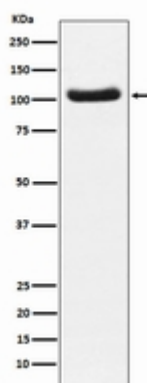
Reactivity : Human Mouse Rat

Predicted Reactivity : Dog,Pig,Cat,Horse,Bovine,Hamster

Application : WB

Application Image

WB



Western blot analysis of PDE2A expression in Human fetal brain lysate.

Recommended Dilution : WB 1:500~1:2000

Mol Weight : 106kDa

Gene Symbol : PDE2A

Uniprot : O00408

Uniprot link:

<https://www.uniprot.org/uniprotkb/o00408>

Immunogen :

Source : Rabbit

Clonality : Monoclonal

Isotype : Rabbit

Buffer:

PBS, pH 7.4, 150mM NaCl, 0.02% sodium azide and 50% glycerol

Storage:

Store at -20 °C. Stable for 12 months from date of receipt.

