

**MA9067**  
**GAPDH Antibody**



- 50ul
- 100 uL

**Order** 021-34695924  
orders@ab-mart.com  
**Support** 400-6123-828  
support1@ab-mart.com  
**Web** www.ab-mart.com.cn

**Description :** Mouse monoclonal antibody to GAPDH

**Alternative Names:**

GAPD; Glyceraldehyde-3-phosphate dehydrogenase; GAPDH; Peptidyl-cysteine S-nitrosylase  
GAPDH

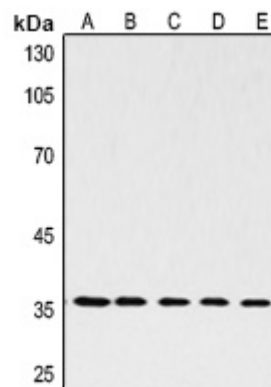
**Source :** Mouse

**Uniprot :** P04406

**Reactivity :** H, M, R

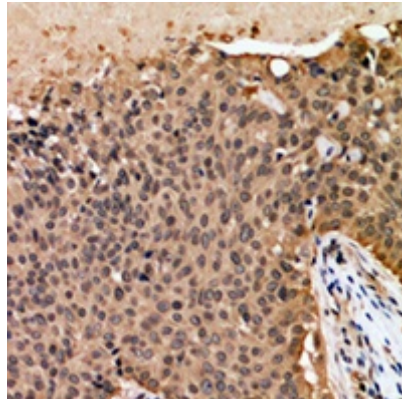
**Application:**

WB



Western blot analysis of GAPDH expression in Hela (A), mouse brain (B), mouse spleen (C), rat liver (D), rat lung (E) whole cell lysates.

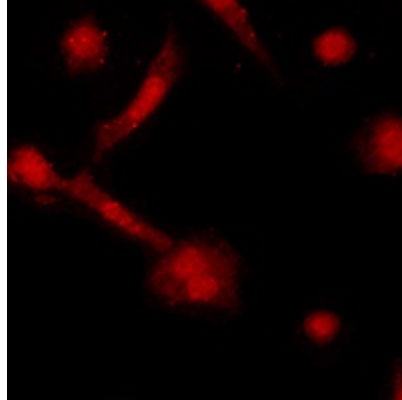
IHC



Immunohistochemical analysis of GAPDH staining in human breast cancer

formalin fixed paraffin embedded tissue section. The section was pre-treated using heat mediated antigen retrieval with sodium citrate buffer (pH 6.0). The section was then incubated with the antibody at room temperature and detected using an HRP conjugated compact polymer system. DAB was used as the chromogen. The section was then counterstained with haematoxylin and mounted with DPX.

IF/ICC



Immunofluorescent analysis of GAPDH staining in HeLa cells. Formalin-fixed cells were permeabilized with 0.1% Triton X-100 in TBS for 5-10 minutes and blocked with 3% BSA-PBS for 30 minutes at room temperature. Cells were probed with the primary antibody in 3% BSA-PBS and incubated overnight at 4 °C in a humidified chamber. Cells were washed with PBST and incubated with a DyLight 594-conjugated secondary antibody (red) in PBS at room temperature in the dark.

**Specificity :** Recognizes endogenous levels of GAPDH protein.

**Clonality :** Monoclonal

**Dilution :** WB (1/3000 - 1/10000), IHC (1/50 - 1/100), IF/IC (1/50 - 1/100)

**Gene Symbol :** GAPDH

**Storage Condition :** Store at -20°C long term.