

MA9126

Beta-tubulin Antibody



- 50ul
- 100 uL

Order 021-34695924
orders@ab-mart.com
Support 400-6123-828
support1@ab-mart.com
Web www.ab-mart.com.cn

Description : Mouse monoclonal antibody to Beta-tubulin

Alternative Names:

TUBB4; Tubulin beta-3 chain; Tubulin beta-4 chain; Tubulin beta-III

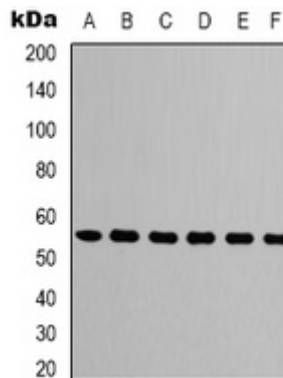
Source : Mouse

Uniprot : Q13509

Reactivity : H, M, R, Mk, D, C, Rb, S, Insect, Yeast

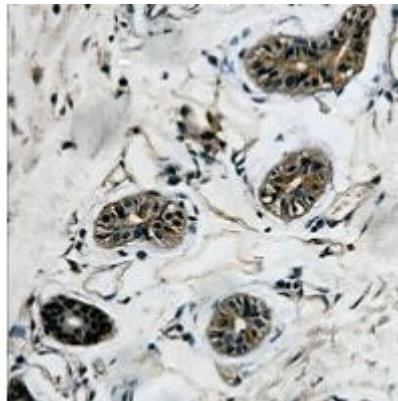
Application:

WB



Western blot analysis of Beta-tubulin expression in A549 (A), mouse brain (B), rat brain (C), chicken lung (D), rabbit testis (E), sheep muscle (F) whole cell lysates.

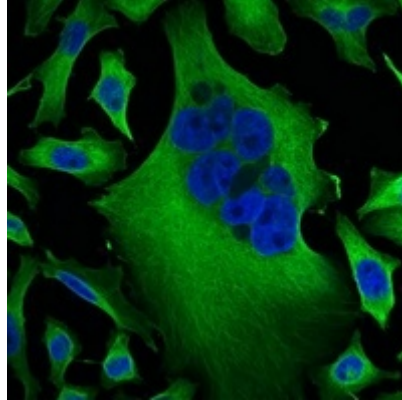
IHC



Immunohistochemical analysis of Beta-tubulin staining in human colon

formalin fixed paraffin embedded tissue section. The section was pre-treated using heat mediated antigen retrieval with sodium citrate buffer (pH 6.0). The section was then incubated with the antibody at room temperature and detected using an HRP conjugated compact polymer system. DAB was used as the chromogen. The section was then counterstained with haematoxylin and mounted with DPX.

IF/ICC



Immunofluorescent analysis of Beta-tubulin staining in HeLa cells. Formalin-fixed cells were permeabilized with 0.1% Triton X-100 in TBS for 5-10 minutes and blocked with 3% BSA-PBS for 30 minutes at room temperature. Cells were probed with the primary antibody in 3% BSA-PBS and incubated overnight at 4 °C in a humidified chamber. Cells were washed with PBST and incubated with a FITC-conjugated secondary antibody (green) in PBS at room temperature in the dark. DAPI was used to stain the cell nuclei (blue).

Specificity : Recognizes endogenous levels of Beta-tubulin protein.

Clonality : Monoclonal

Dilution : WB (1/2000 - 1/5000), IHC (1/50 - 1/200), IF/IC (1/100 - 1/200)

Gene Symbol : TUBB3

Storage Condition : Store at -20°C long term.