

**PHI9766**

**GSDME Antibody**



- 50ul
- 100 uL

<b>Order</b>	021-34695924 orders@ab-mart.com
<b>Support</b>	400-6123-828 support1@ab-mart.com
<b>Web</b>	www.ab-mart.com.cn

**Background:**

Involved in apoptosis and cell survival. Plays a role in the TP53-regulated cellular response to DNA damage probably by cooperating with TP53.

**Alternative Names:**

2310037D07Rik antibody; 4932441K13Rik antibody; Deafness, autosomal dominant 5 antibody; Deafness, autosomal dominant 5 protein antibody; DFNA5 antibody; DFNA5 gene antibody; DFNA5\_HUMAN antibody; Dfna5h antibody; EG14210 antibody; Fin15 antibody; ICERE 1 antibody; ICERE-1 antibody; Inversely correlated with estrogen receptor expression 1 antibody; Non-syndromic hearing impairment protein 5 antibody; Nonsyndromic hearing impairment protein antibody

**Product Type :** Polyclonal Antibody

**Uniprot :** O60443

**Mol.Wt. :** 54.555 kDa ;

**Immunogen :** Recombinant Human Gasdermin-E protein (1-260AA)

**Host Species :** Rabbit

**Species Reactivity :** Human

**Applications:**

ELISA, WB, IHC;

Recommended dilution:

WB:1:500-1:2000, IHC:1:20-1:200

**Isotype :** IgG

**Buffer :** PBS with 0.02% sodium azide, 50% glycerol, pH7.3.

**Form :** Liquid

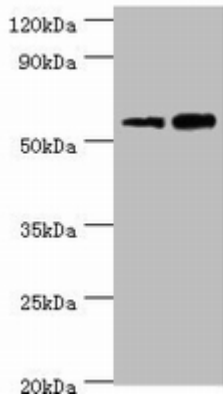
**Purification Method :** >95%, Antigen Affinity Purified

**Research Areas :** Neuroscience

**Storage:**

Upon receipt, Store at -20°C. Do not aliquot the antibody

**Images:**



Western blot

All lanes: Non-syndromic hearing impairment protein 5 antibody at 10µg/ml

Lane 1: HeLa whole cell lysate

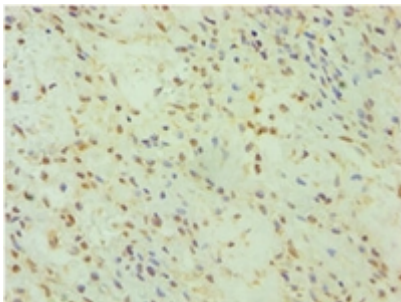
Lane 2: HepG2 whole cell lysate

Secondary

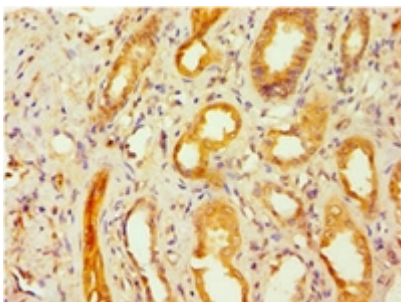
Goat polyclonal to rabbit IgG at 1/10000 dilution

Predicted band size: 55, 11, 37 kDa

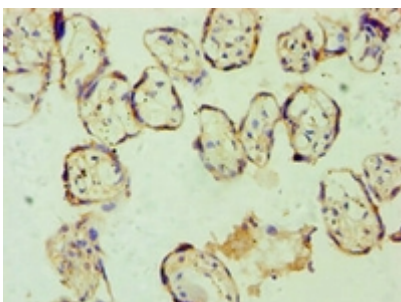
Observed band size: 55 kDa



Immunohistochemistry of paraffin-embedded human breast cancer using PHI9766 at dilution of 1:100



Immunohistochemistry of paraffin-embedded human kidney tissue using PHI9766 at dilution of 1:100



Immunohistochemistry of paraffin-embedded human placenta tissue using PHI9766 at dilution of 1:100

