

PHO8727

FLOT1 Antibody



- 50ul
- 100 uL

| | |
|----------------|--------------------------------------|
| Order | 021-34695924 orders@ab-mart.com |
| Support | 400-6123-828 support1@ab-mart.com |
| Web | www.ab-mart.com.cn |

Background:

May act as a scaffolding protein within caveolar membranes, functionally participating in formation of caveolae or caveolae-like vesicles.

Alternative Names:

FLOT 1 antibody; FLOT1 antibody; FLOT1_HUMAN antibody; Flotillin-1 antibody; Flotillin1 antibody; Integral membrane component of caveolae antibody; Reggie 2 antibody

Product Type : Polyclonal Antibody

Uniprot : O75955

Mol.Wt. : 47.355 kDa ;

Immunogen : Recombinant Human Flotillin-1 protein (169-251AA)

Host Species : Rabbit

Species Reactivity : Human, Rat, Mouse

Applications:

ELISA, WB, IHC, IF, IP;

Recommended dilution:

WB:1:500-1:5000, IHC:1:20-1:200, IF:1:50-1:200, IP:1:200-1:2000

Isotype : IgG

Buffer:

Preservative: 0.03% Proclin 300

Constituents: 50% Glycerol, 0.01M PBS, pH 7.4

Form : Liquid

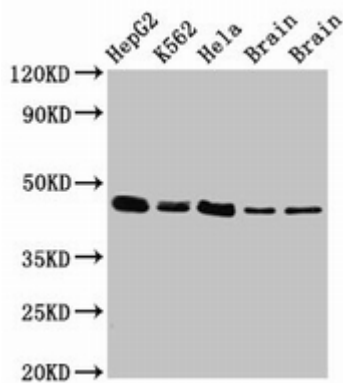
Purification Method : >95%, Protein G purified

Research Areas : Cell biology; Signal transduction

Storage:

Upon receipt, Store at -20°C. Do not aliquot the antibody

Images:



Western Blot

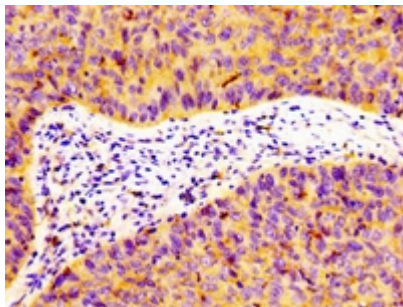
Positive WB detected in: HepG2 whole cell lysate, K562 whole cell lysate, HeLa whole cell lysate, Rat brain tissue, Mouse brain tissue
All lanes: FLOT1 antibody at 3µg/ml

Secondary

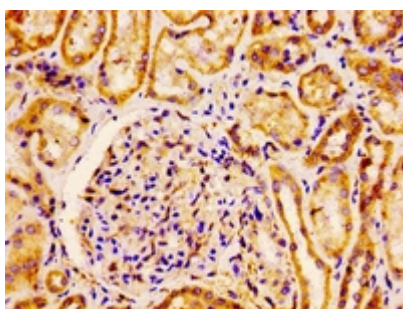
Goat polyclonal to rabbit IgG at 1/50000 dilution

Predicted band size: 48, 43 kDa

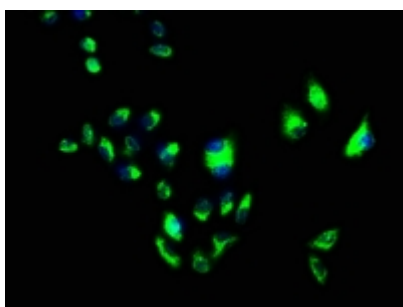
Observed band size: 48 kDa



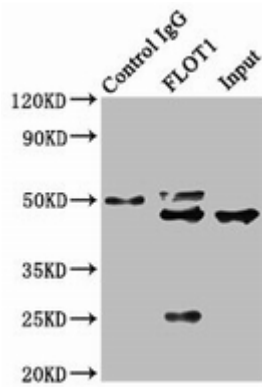
IHC image of PHO8727 diluted at 1:100 and staining in paraffin-embedded human cervical cancer performed on a Leica Bond™ system. After dewaxing and hydration, antigen retrieval was mediated by high pressure in a citrate buffer (pH 6.0). Section was blocked with 10% normal goat serum 30min at RT. Then primary antibody (1% BSA) was incubated at 4°C overnight. The primary is detected by a biotinylated secondary antibody and visualized using an HRP conjugated SP system.



IHC image of PHO8727 diluted at 1:100 and staining in paraffin-embedded human kidney tissue performed on a Leica Bond™ system. After dewaxing and hydration, antigen retrieval was mediated by high pressure in a citrate buffer (pH 6.0). Section was blocked with 10% normal goat serum 30min at RT. Then primary antibody (1% BSA) was incubated at 4°C overnight. The primary is detected by a biotinylated secondary antibody and visualized using an HRP conjugated ABC system.



Immunofluorescence staining of HeLa cells with PHO8727 at 1:100, counter-stained with DAPI. The cells were fixed in 4% formaldehyde, permeabilized using 0.2% Triton X-100 and blocked in 10% normal Goat Serum. The cells were then incubated with the antibody overnight at 4°C. The secondary antibody was Alexa Fluor 488-conjugated AffiniPure Goat Anti-Rabbit IgG(H+L).

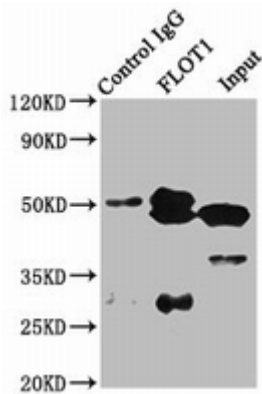


Immunoprecipitating FLOT1 in HeLa whole cell lysate

Lane 1: Rabbit control IgG instead of PHO8727 in HeLa whole cell lysate. For western blotting, a HRP-conjugated Protein G antibody was used as the secondary antibody (1/2000)

Lane 2: PHO8727 (8 μ g) + HeLa whole cell lysate (500 μ g)

Lane 3: HeLa whole cell lysate (10 μ g)



Immunoprecipitating FLOT1 in K562 whole cell lysate

Lane 1: Rabbit control IgG instead of PHO8727 in K562 whole cell lysate. For western blotting, a HRP-conjugated Protein G antibody was used as the secondary antibody (1/5000)

Lane 2: PHO8727 (8 μ g) + K562 whole cell lysate (500 μ g)

Lane 3: K562 whole cell lysate (20 μ g)