

PHW9976
NPC2 Antibody



- 50ul
- 100 uL

Order	021-34695924 orders@ab-mart.com
Support	400-6123-828 support1@ab-mart.com
Web	www.ab-mart.com.cn

Background:

Intracellular cholesterol transporter which acts in concert with NPC1 and plays an important role in the egress of cholesterol from the endosomal/lysosomal compartment. Both NPC1 and NPC2 function as the cellular 'tag team duo' (TTD) to catalyze the mobilization of cholesterol within the multivesicular environment of the late endosome (LE) to effect egress through the limiting bilayer of the LE. NPC2 binds unesterified cholesterol that has been released from LDLs in the lumen of the late endosomes/lysosomes and transfers it to the cholesterol-binding pocket of the N-terminal domain of NPC1. Cholesterol binds to NPC1 with the hydroxyl group buried in the binding pocket and is exported from the limiting membrane of late endosomes/lysosomes to the ER and plasma membrane by an unknown mechanism. The secreted form of NPC2 regulates biliary cholesterol secretion via stimulation of ABCG5/ABCG8-mediated cholesterol transport.

Alternative Names:

EDDM1 antibody; Epididymal protein 1 antibody; Epididymal secretory protein antibody; Epididymal secretory protein E1 antibody; hE1 antibody; Human epididymis-specific protein 1 antibody; Niemann-Pick disease type C2 antibody; Niemann-Pick disease type C2 protein antibody; NPC intracellular cholesterol transporter 2 antibody; NPC2 antibody; NPC2_HUMAN antibody; Tissue specific secretory protein antibody

Product Type : Polyclonal Antibody

Uniprot : P61916

Mol.Wt. : 16.570 kDa ;

Immunogen:

Recombinant Human NPC intracellular cholesterol transporter 2 protein (20-151AA)

Host Species : Rabbit

Species Reactivity : Human

Applications:

ELISA, IHC, IF;

Recommended dilution:

IHC:1:20-1:200, IF:1:50-1:200

Isotype : IgG

Buffer:

Preservative: 0.03% Proclin 300

Constituents: 50% Glycerol, 0.01M PBS, PH 7.4

Form : Liquid

Purification Method : >95%, Protein G purified

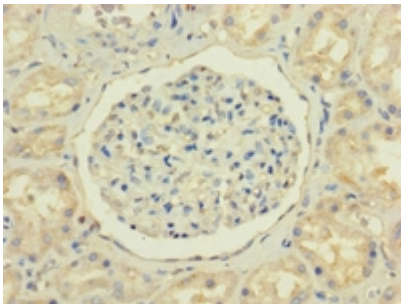
Research Areas:

Neuroscience; Cardiovascular; Metabolism; Signal transduction

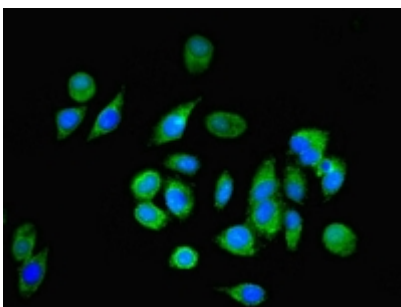
Storage:

Upon receipt,Store at -20°C. Do not aliquot the antibody

Images:



Immunohistochemistry of paraffin-embedded human kidney tissue using PHW9976 at dilution of 1:100



Immunofluorescent analysis of A549 cells using PHW9976 at dilution of 1:100 and Alexa Fluor 488-conjugated AffiniPure Goat Anti-Rabbit IgG(H+L)