

**LK01059**

**FITC-Linked Connective Tissue Growth Factor (CTGF)**



**Order** 021-34695924  
orders@ab-mart.com  
**Support** 400-6123-828  
support1@ab-mart.com  
**Web** www.ab-mart.com.cn

100ul;

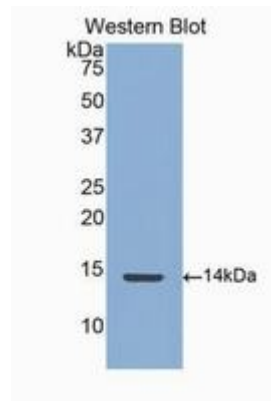
**UniProt :** P29279

**Alternative Names:**

CCN2; HCS24; IGFBP8; NOV2; Insulin-Like Growth Factor-Binding Protein 8; Hypertrophic Chondrocyte-Specific Protein 24; CCN Family Member 2

**Application:**

WB



0

**Reactivity :** Mouse;Rat;Human

**Application :** WB IHC IF

**Dilution:**

Western blotting: 0.2-2µg/mL;1:250-2500

Immunohistochemistry: 5-20µg/mL;1:25-100

Immunocytochemistry: 5-20µg/mL;1:25-100

Optimal working dilutions must be determined by end user.

**Purification:**

Antigen-specific affinity chromatography followed by Protein A affinity chromatography

**Storage Condition and Buffer:**

PBS, pH7.4, containing 0.02% NaN<sub>3</sub>, 50% glycerol.

**Tag :** Cytokine;

**Form :** Liquid

**Concentration :** 500µg/mL

