

LK09540

Biotin-Linked Macrophage Inflammatory Protein 3 Alpha  
(MIP3a)

Abmart

□ 100ul;

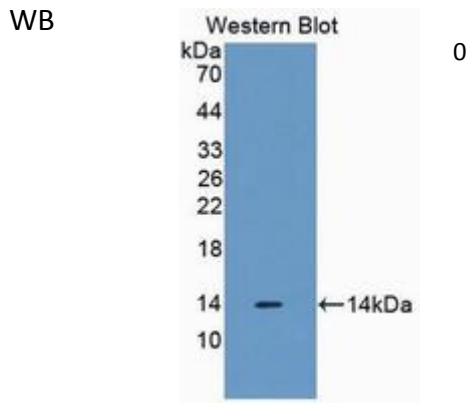
**Order** 021-34695924  
orders@ab-mart.com  
**Support** 400-6123-828  
support1@ab-mart.com  
**Web** www.ab-mart.com.cn

**UniProt :** O89093

**Alternative Names:**

CCL20; CKb4; LARC; MIP3-A; SCYA20; ST38; Small Inducible Cytokine Subfamily A(Cys-Cys)Member 20; Beta-Chemokine Exodus-1; Liver And Activation-Regulated Chemokine

**Application:**



**Reactivity :** Mouse

**Application :** WB IHC IF

**Dilution:**

Western blotting: 0.2-2µg/mL;1:250-2500

Immunohistochemistry: 5-20µg/mL;1:25-100

Immunocytochemistry: 5-20µg/mL;1:25-100

Optimal working dilutions must be determined by end user.

**Purification:**

Antigen-specific affinity chromatography followed by Protein A affinity chromatography

**Storage Condition and Buffer:**

PBS, pH7.4, containing 0.02% NaN<sub>3</sub>, 50% glycerol.

**Tag :** Cytokine;Infection immunity;

**Form :** Liquid

**Concentration :** 500µg/mL

