

LK14612

**Biotin-Linked Structural Maintenance Of Chromosomes
Protein 3 (SMC3)**

Abmart

Order 021-34695924
orders@ab-mart.com
Support 400-6123-828
support1@ab-mart.com
Web www.ab-mart.com.cn

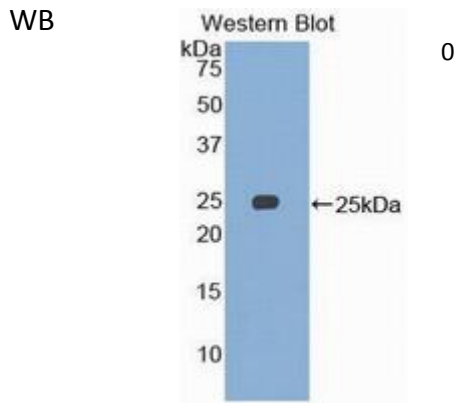
□ 100ul;

UniProt : Q9UQE7

Alternative Names:

BMH; BAM; CSPG6; HCAP; SMC3L1; Chondroitin Sulfate Proteoglycan 6; Bamacan; Basement membrane-associated chondroitin proteoglycan; Chromosome-associated peptide

Application:



Reactivity : Rat;Human

Application : WB IHC IF

Dilution:

Western blotting: 0.2-2µg/mL;1:250-2500

Immunohistochemistry: 5-20µg/mL;1:25-100

Immunocytochemistry: 5-20µg/mL;1:25-100

Optimal working dilutions must be determined by end user.

Purification:

Antigen-specific affinity chromatography followed by Protein A affinity chromatography

Storage Condition and Buffer:

PBS, pH7.4, containing 0.02% NaN₃, 50% glycerol.

Tag : Developmental science;

Form : Liquid

Concentration : 500µg/mL

