

LK18577

Biotin-Linked Glucose Transporter 1 (GLUT1)



Order 021-34695924
orders@ab-mart.com
Support 400-6123-828
support1@ab-mart.com
Web www.ab-mart.com.cn

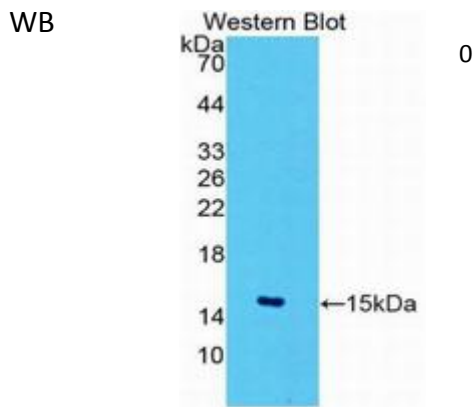
□ 100ul;

UniProt : P11166

Alternative Names:

SLC2A1; SLC2-A1; GLUT; Solute Carrier Family 2 Member 1, Facilitated Glucose Transporter; Glucose transporter type 1, erythrocyte/brain; HepG2 glucose transporter

Application:



Reactivity : Mouse;Rat;Human

Application : WB IHC IF

Dilution:

Western blotting: 0.2-2µg/mL;1:250-2500

Immunohistochemistry: 5-20µg/mL;1:25-100

Immunocytochemistry: 5-20µg/mL;1:25-100

Optimal working dilutions must be determined by end user.

Purification:

Antigen-specific affinity chromatography followed by Protein A affinity chromatography

Storage Condition and Buffer:

PBS, pH7.4, containing 0.02% NaN₃, 50% glycerol.

Tag : Signal transduction;Metabolic pathway;Endocrinology;

Form : Liquid

Concentration : 500µg/mL

