

LK20754

Biotin-Linked Alanine Aminotransferase (ALT)



Order 021-34695924
orders@ab-mart.com
Support 400-6123-828
support1@ab-mart.com
Web www.ab-mart.com.cn

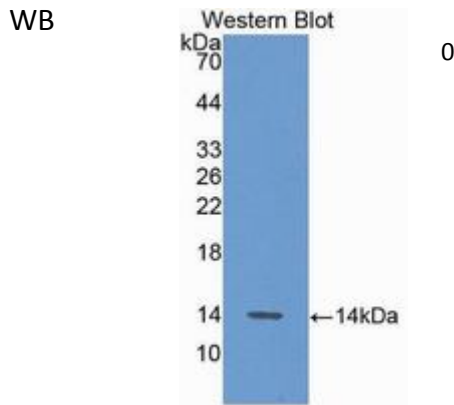
□ 100ul;

UniProt : P24298

Alternative Names:

GPT; ALAT; SGPT; AAT1; GPT1; Serum Glutamic Pyruvic Transaminase; Alanine Transaminase; Glutamate pyruvate transaminase 1; Glutamic--alanine transaminase 1

Application:



Reactivity : Mouse;Rat;Human

Application : WB IHC IF

Dilution:

Western blotting: 0.5-2ug/ml
Immunocytochemistry in formalin fixed cells: 5-20ug/ml
Immunohistochemistry in formalin fixed frozen section: 5-20ug/ml
Immunohistochemistry in paraffin section: 5-20ug/ml
Enzyme-linked Immunosorbent Assay: 0.05-2ug/ml
Optimal working dilutions must be determined by end user.

Purification:

Antigen-specific affinity chromatography followed by Protein A affinity chromatography

Storage Condition and Buffer:

PBS, pH7.4, containing 0.02% NaN3, 50% glycerol.

Tag : Enzyme & Kinase;Infection immunity;Hepatology;

Form : Liquid

Concentration : 500µg/mL