

LK21531

FITC-Linked Fibrinogen Beta Chain (FGB)



Order 021-34695924
orders@ab-mart.com
Support 400-6123-828
support1@ab-mart.com
Web www.ab-mart.com.cn

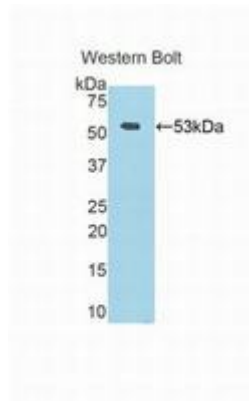
100ul;

UniProt : P02675

Alternative Names : FG-B; Fibrinopeptide B; Fibrinogen Beta

Application:

WB



0

Reactivity : Human

Application : WB IHC IF

Dilution:

Western blotting: 0.2-2 μ g/mL;1:250-2500

Immunohistochemistry: 5-20 μ g/mL;1:25-100

Immunocytochemistry: 5-20 μ g/mL;1:25-100

Optimal working dilutions must be determined by end user.

Purification:

Antigen-specific affinity chromatography followed by Protein A affinity chromatography

Storage Condition and Buffer:

PBS, pH7.4, containing 0.02% NaN₃, 50% glycerol.

Tag : Signal transduction;Infection immunity;Hematology;

Form : Liquid

Concentration : 500 μ g/mL