

LK22127

FITC-Linked Promyelocytic Leukemia Protein (PML)



**Order** 021-34695924  
orders@ab-mart.com  
**Support** 400-6123-828  
support1@ab-mart.com  
**Web** www.ab-mart.com.cn

100ul;

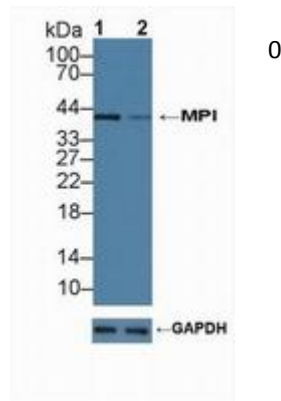
**UniProt :** P29590

**Alternative Names:**

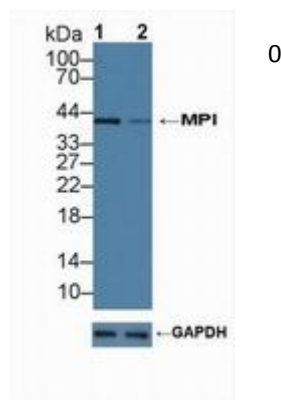
MYL; RNF71; TRIM19; Probable Transcription Factor PML; Ring Finger Protein 71; Tripartite motif-containing protein 19

**Application:**

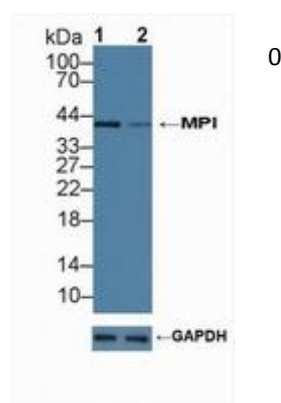
WB



0



0



0

**Reactivity :** Human

**Application :** WB IHC IF

**Dilution:**

Western blotting: 0.2-2µg/mL;1:250-2500

Immunohistochemistry: 5-20µg/mL;1:25-100

Immunocytochemistry: 5-20µg/mL;1:25-100

Optimal working dilutions must be determined by end user.

**Purification:**

Antigen-specific affinity chromatography followed by Protein A affinity chromatography

**Storage Condition and Buffer:**

PBS, pH7.4, containing 0.02% NaN<sub>3</sub>, 50% glycerol.

**Tag :** Tumor immunity;

**Form :** Liquid

**Concentration :** 500µg/mL