

**LK22753**

**FITC-Linked Cyclophilin B (CYPB)**

**Abmart**

**Order** 021-34695924  
orders@ab-mart.com  
**Support** 400-6123-828  
support1@ab-mart.com  
**Web** www.ab-mart.com.cn

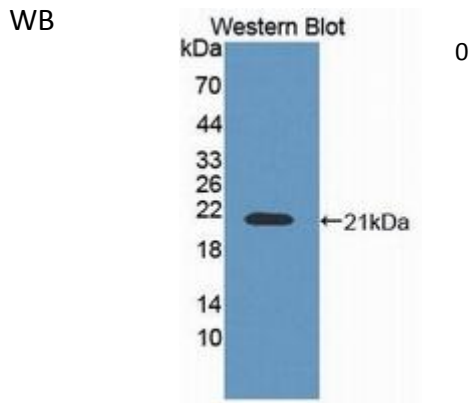
□ 100ul;

**UniProt :** P24368

**Alternative Names:**

PPIB; PPI-B; CYP-S1; CyP-B; SCYLP; PPIase B; Rotamase B; S-cyclophilin; Peptidylprolyl Isomerase B; Peptidyl-Prolyl Cis-Trans Isomerase B

**Application:**



**Reactivity :** Human;Mouse;Rat

**Application :** WB IHC IF

**Dilution:**

Western blotting: 0.2-2µg/mL;1:250-2500

Immunohistochemistry: 5-20µg/mL;1:25-100

Immunocytochemistry: 5-20µg/mL;1:25-100

Optimal working dilutions must be determined by end user.

**Purification:**

Antigen-specific affinity chromatography followed by Protein A affinity chromatography

**Storage Condition and Buffer:**

PBS, pH7.4, containing 0.02% NaN<sub>3</sub>, 50% glycerol.

**Tag :** Tumor immunity;Immune molecule;

**Form :** Liquid

**Concentration :** 500µg/mL

