

**LK23527**

**Biotin-Linked Complement 1 Inhibitor (C1INH)**



**Order** 021-34695924  
orders@ab-mart.com  
**Support** 400-6123-828  
support1@ab-mart.com  
**Web** www.ab-mart.com.cn

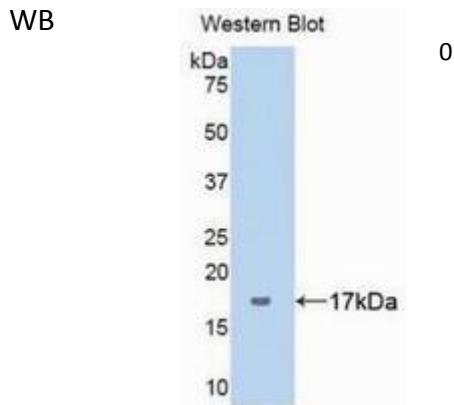
□ 100ul;

**UniProt :** P05155

**Alternative Names:**

SERPING1; C1IN; C1-INH; C1NH; HAE1; HAE2; Serpin Peptidase Inhibitor Clade G Member 1; Angioedema Hereditary; C1 Inhibitor; C1 Esterase Inhibitor

**Application:**



**Reactivity :** Human

**Application :** WB IHC IF

**Dilution:**

Western blotting: 0.5-2ug/ml

Immunocytochemistry in formalin fixed cells: 5-20ug/ml

Immunohistochemistry in formalin fixed frozen section: 5-20ug/ml

Immunohistochemistry in paraffin section: 5-20ug/ml

Enzyme-linked Immunosorbent Assay: 0.05-2ug/ml

Optimal working dilutions must be determined by end user.

**Purification:**

Antigen-specific affinity chromatography followed by Protein A affinity chromatography

**Storage Condition and Buffer:**

0.01M PBS, pH7.4, containing 0.05% Proclin-300, 50% glycerol.

**Tag :** Infection immunity;Immune molecule;

**Form :** Liquid

**Concentration :** 500µg/mL