

LK23593

Biotin-Linked Complement 1 Inhibitor (C1INH)



Order 021-34695924
orders@ab-mart.com
Support 400-6123-828
support1@ab-mart.com
Web www.ab-mart.com.cn

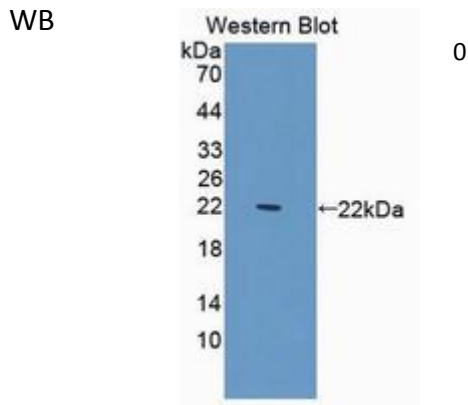
□ 100ul;

UniProt : Q6P734

Alternative Names:

SERPING1; C1IN; C1-INH; C1NH; HAE1; HAE2; Serpin Peptidase Inhibitor Clade G Member 1; Angioedema Hereditary; C1 Inhibitor; C1 Esterase Inhibitor

Application:



Reactivity : Rat

Application : WB IHC IF

Dilution:

Western blotting: 0.2-2µg/mL;1:250-2500

Immunohistochemistry: 5-20µg/mL;1:25-100

Immunocytochemistry: 5-20µg/mL;1:25-100

Optimal working dilutions must be determined by end user.

Purification:

Antigen-specific affinity chromatography followed by Protein A affinity chromatography

Storage Condition and Buffer:

PBS, pH7.4, containing 0.02% NaN₃, 50% glycerol.

Tag : Infection immunity;Immune molecule;

Form : Liquid

Concentration : 500µg/mL

