

LK32199

FITC-Linked Galectin 1 (GAL1)



Order 021-34695924
orders@ab-mart.com
Support 400-6123-828
support1@ab-mart.com
Web www.ab-mart.com.cn

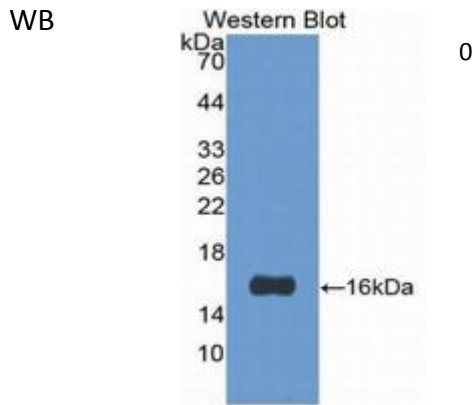
□ 100ul;

UniProt : P11762

Alternative Names:

LGALS1; GBP; HLBP14; Galaptin; Lectin,Galactoside-Binding Soluble 1; 14 kDa laminin-binding protein; Lactose-binding lectin 1; Putative MAPK-activating protein PM12; S-Lac lectin

Application:



Reactivity : Human;Mouse;Rat

Application : WB IHC IF

Dilution:

Western blotting: 0.2-2µg/mL;1:250-2500

Immunohistochemistry: 5-20µg/mL;1:25-100

Immunocytochemistry: 5-20µg/mL;1:25-100

Optimal working dilutions must be determined by end user.

Purification:

Antigen-specific affinity chromatography followed by Protein A affinity chromatography

Storage Condition and Buffer:

PBS, pH7.4, containing 0.02% NaN₃, 50% glycerol.

Tag : Tumor immunity;

Form : Liquid

Concentration : 500µg/mL

