

**LK47223**

**Biotin-Linked Calcitonin (CT)**



**Order** 021-34695924  
orders@ab-mart.com  
**Support** 400-6123-828  
support1@ab-mart.com  
**Web** www.ab-mart.com.cn

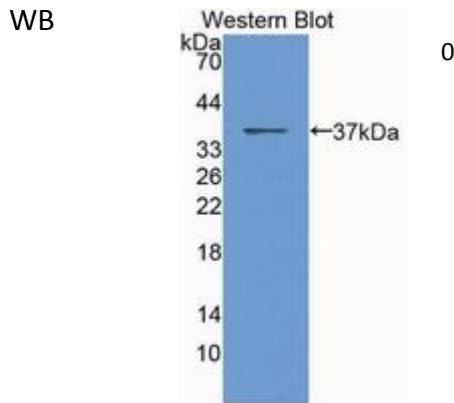
100ul;

**UniProt :** P01258

**Alternative Names:**

CALCA; CALC1; CGRP-I; CGRP1; KC; CCP; PDN-21; Katalcalcin; Calcitonin-Related Polypeptide Alpha; Calcitonin carboxyl-terminal peptide

**Application:**



**Reactivity :** Mouse;Rat;Human

**Application :** IHC IF

**Dilution:**

Immunocytochemistry in formalin fixed cells: 5-20ug/ml  
Immunohistochemistry in formalin fixed frozen section: 5-20ug/ml  
Immunohistochemistry in paraffin section: 5-20ug/ml  
Enzyme-linked Immunosorbent Assay: 0.05-2ug/ml  
Optimal working dilutions must be determined by end user.

**Purification:**

Antigen-specific affinity chromatography followed by Protein A affinity chromatography

**Storage Condition and Buffer:**

0.01M PBS, pH7.4, containing 0.05% Proclin-300, 50% glycerol.

**Tag:**

Metabolic pathway;Endocrinology;Hormone metabolism;Bone metabolism;

**Form :** Liquid

**Concentration :** 500µg/mL