

**LK48251**

**Biotin-Linked Endothelin 1 (EDN1)**



**Order** 021-34695924  
orders@ab-mart.com  
**Support** 400-6123-828  
support1@ab-mart.com  
**Web** www.ab-mart.com.cn

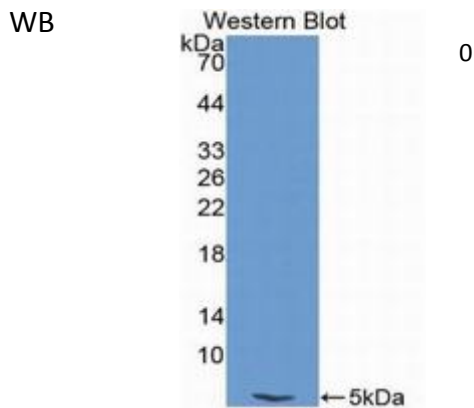
□ 100ul;

**UniProt :** P05305

**Alternative Names:**

ET1; PPET1; Preproendothelin-1; Big endothelin-1

**Application:**



**Reactivity :** Human

**Application :** WB IHC IF

**Dilution:**

Western blotting: 0.2-2µg/mL;1:250-2500

Immunohistochemistry: 5-20µg/mL;1:25-100

Immunocytochemistry: 5-20µg/mL;1:25-100

Optimal working dilutions must be determined by end user.

**Purification:**

Antigen-specific affinity chromatography followed by Protein A affinity chromatography

**Storage Condition and Buffer:**

PBS, pH7.4, containing 0.02% NaN3, 50% glycerol.

**Tag :** Endocrinology;Cardiovascular biology;

**Form :** Liquid

**Concentration :** 500µg/mL