

LK51661

Biotin-Linked Cytokeratin 16 (CK16)



Order 021-34695924
orders@ab-mart.com
Support 400-6123-828
support1@ab-mart.com
Web www.ab-mart.com.cn

100ul;

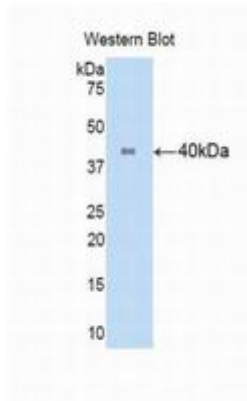
UniProt : P08779

Alternative Names:

KRT16; NEPPK; Keratin 16; Focal Non-Epidermolytic Palmoplantar Keratoderma; Keratin, type I cytoskeletal 16

Application:

WB



0

Reactivity : Human

Application : WB IHC IF

Dilution:

Western blotting: 0.2-2µg/mL;1:250-2500

Immunohistochemistry: 5-20µg/mL;1:25-100

Immunocytochemistry: 5-20µg/mL;1:25-100

Optimal working dilutions must be determined by end user.

Purification:

Antigen-specific affinity chromatography followed by Protein A affinity chromatography

Storage Condition and Buffer:

PBS, pH7.4, containing 0.02% NaN3, 50% glycerol.

Tag : Tumor immunity;Infection immunity;

Form : Liquid

Concentration : 500µg/mL