

LK53774

Biotin-Linked Enolase, Neuron Specific (NSE)



Order 021-34695924
orders@ab-mart.com
Support 400-6123-828
support1@ab-mart.com
Web www.ab-mart.com.cn

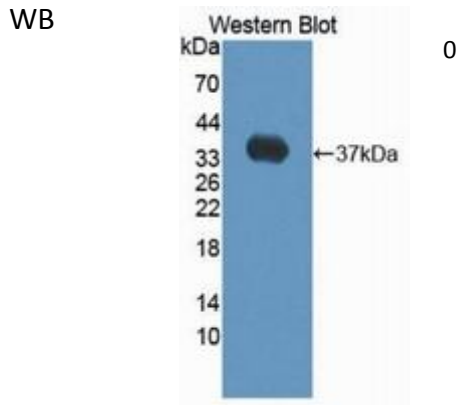
100ul;

UniProt : Q545V3

Alternative Names:

ENO2; Enolase 2; Gamma Enolase; 2-phospho-D-glycerate hydro-lyase; Neural enolase

Application:



Reactivity : Human;Rat;Mouse

Application : WB IHC IF

Dilution:

Western blotting: 0.2-2µg/mL;1:250-2500

Immunohistochemistry: 5-20µg/mL;1:25-100

Immunocytochemistry: 5-20µg/mL;1:25-100

Optimal working dilutions must be determined by end user.

Purification:

Antigen-specific affinity chromatography followed by Protein A affinity chromatography

Storage Condition and Buffer:

PBS, pH7.4, containing 0.02% NaN3, 50% glycerol.

Tag:

Enzyme & Kinase;Tumor immunity;Infection immunity;Neuro science;

Form : Liquid

Concentration : 500µg/mL

