

**LK56785**

**FITC-Linked S100 Calcium Binding Protein B (S100B)**



□ 100ul;

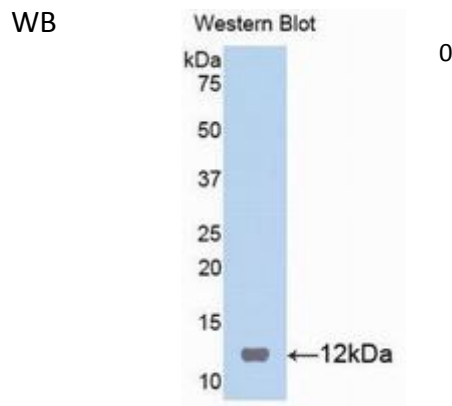
**Order** 021-34695924  
orders@ab-mart.com  
**Support** 400-6123-828  
support1@ab-mart.com  
**Web** www.ab-mart.com.cn

**UniProt :** P04631

**Alternative Names:**

S100-B; NEF; S100Beta; S-100 protein subunit beta

**Application:**



**Reactivity :** Human;Mouse;Rat

**Application :** WB IHC IF

**Dilution:**

Western blotting: 0.2-2µg/mL;1:250-2500

Immunohistochemistry: 5-20µg/mL;1:25-100

Immunocytochemistry: 5-20µg/mL;1:25-100

Optimal working dilutions must be determined by end user.

**Purification:**

Antigen-specific affinity chromatography followed by Protein A affinity chromatography

**Storage Condition and Buffer:**

PBS, pH7.4, containing 0.02% NaN<sub>3</sub>, 50% glycerol.

**Tag :** Tumor immunity;Infection immunity;Neuro science;

**Form :** Liquid

**Concentration :** 500µg/mL