

LK62660

FITC-Linked Caspase 3 (CASP3)



Order 021-34695924
orders@ab-mart.com
Support 400-6123-828
support1@ab-mart.com
Web www.ab-mart.com.cn

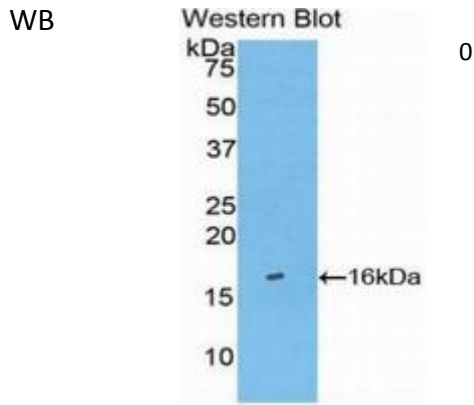
□ 100ul;

UniProt : P70677

Alternative Names:

CPP32; CPP32B; SCA1; Apoptain; Yama; Apoptosis-Related Cysteine Peptidase; Cysteinyl Aspartate Specific Proteinases 3; SREBP cleavage activity 1

Application:



Reactivity : Human;Rat;Mouse

Application : WB IHC IF

Dilution:

Western blotting: 0.5-2µg/mL

Immunohistochemistry: 5-20µg/mL

Immunocytochemistry: 5-20µg/mL

Optimal working dilutions must be determined by end user.

Purification:

Antigen-specific affinity chromatography followed by Protein A affinity chromatography

Storage Condition and Buffer:

0.01M PBS, pH7.4, containing 0.05% Proclin-300, 50% glycerol.

Tag:

Signal transduction;Enzyme & Kinase;Apoptosis;Tumor immunity;Infection immunity;

Form : Liquid

Concentration : 500µg/mL