

**LK82181**

**Biotin-Linked C Reactive Protein (CRP)**



**Order** 021-34695924  
orders@ab-mart.com  
**Support** 400-6123-828  
support1@ab-mart.com  
**Web** www.ab-mart.com.cn

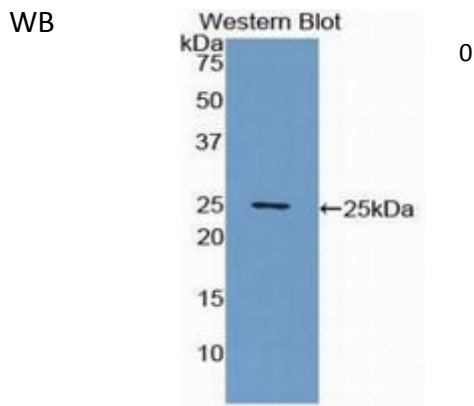
□ 100ul;

**UniProt :** O19062

**Alternative Names:**

C-RP; PTX1; Pentraxin-Related; Pentraxin 1

**Application:**



**Reactivity :** Pig

**Application :** WB IHC IF

**Dilution:**

Western blotting: 0.2-2µg/mL;1:500-5000

Immunohistochemistry: 5-20µg/mL;1:50-200

Immunocytochemistry: 5-20µg/mL;1:50-200

Optimal working dilutions must be determined by end user.

**Purification :** Protein A + Protein G affinity chromatography

**Storage Condition and Buffer:**

PBS, pH7.4, containing 0.02% NaN<sub>3</sub>, 50% glycerol.

**Tag:**

Tumor immunity;Infection immunity;Cardiovascular biology;Rheumatology;

**Form :** Liquid

**Concentration :** 1mg/mL