

LK85981

Biotin-Linked Mannose Associated Serine Protease 2 (MASP2)

Abmart

□ 100ul;

Order 021-34695924
orders@ab-mart.com
Support 400-6123-828
support1@ab-mart.com
Web www.ab-mart.com.cn

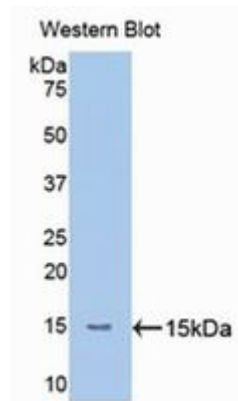
UniProt : O00187

Alternative Names:

Mannose-binding protein-associated serine protease 2; mannan-Binding Lectin Serine Peptidase 2; MBL-associated serine protease 2

Application:

WB



Reactivity : Human

Application : WB IHC IF

Dilution:

Western blotting: 0.2-2µg/mL;1:250-2500

Immunohistochemistry: 5-20µg/mL;1:25-100

Immunocytochemistry: 5-20µg/mL;1:25-100

Optimal working dilutions must be determined by end user.

Purification:

Antigen-specific affinity chromatography followed by Protein A affinity chromatography

Storage Condition and Buffer:

PBS, pH7.4, containing 0.02% NaN₃, 50% glycerol.

Tag : Enzyme & Kinase;Infection immunity;Immune molecule;

Form : Liquid

Concentration : 500µg/mL

