

LK86790

Biotin-Linked Phospholipase A2 Group VII (LpPLA2)

Abmart

Order 021-34695924
orders@ab-mart.com
Support 400-6123-828
support1@ab-mart.com
Web www.ab-mart.com.cn

□ 100ul;

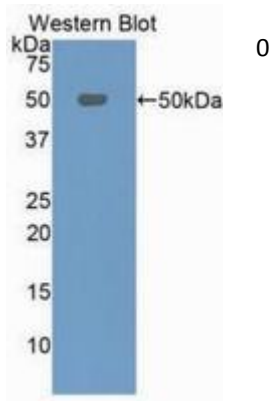
UniProt : Q13093

Alternative Names:

PLA2G7; PAF-AH; PAFAH; Lp-PLA2; LDL-PLA2; Platelet Activating Factor Acetylhydrolase,Plasma; Phospholipase A2,Group VII; LDL-associated phospholipase A2; Phospholipase A2, Lipoprotein Associated

Application:

WB



Reactivity : Human

Application : WB IHC IF

Dilution:

Western blotting: 0.2-2µg/mL;1:250-2500

Immunohistochemistry: 5-20µg/mL;1:25-100

Immunocytochemistry: 5-20µg/mL;1:25-100

Optimal working dilutions must be determined by end user.

Purification:

Antigen-specific affinity chromatography followed by Protein A affinity chromatography

Storage Condition and Buffer:

PBS, pH7.4, containing 0.02% NaN₃, 50% glycerol.

Tag : Enzyme & Kinase;Metabolic pathway;Infection immunity;

Form : Liquid

Concentration : 500µg/mL

