

**MN50003**

E2 Tag mAb

**Abmart**

**Order** 021-34695924  
orders@ab-mart.com  
**Support** 400-6123-828  
support1@ab-mart.com  
**Web** www.ab-mart.com.cn

50ul;100ul;

### Background:

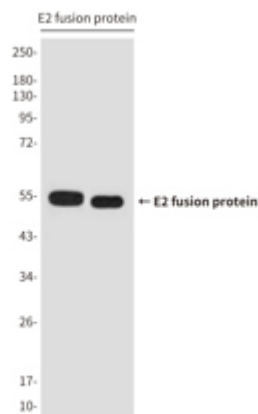
The E2 Tag is a peptide which is derived from the Bovine Papillomavirus type-1 transactivator protein E2 and consists of 10 amino acids (SSTSSDFRDR). The detection of E2 tagged proteins is based on the binding of mouse monoclonal antibodies specific to the tagged recombinant protein.

**Alternative Names :** SSTSSDFRDR tag

**Source :** Mouse

### Application

WB



2ug E2 fusion protein+ Primary antibody  
dilution at 1) 1:5000. 2) 1:10000

**Clonality :** Monoclonal Antibody

**Isotype :** IgG1

**Immunogen :** Synthetic Peptide of E2-Tag

**Reactivity :** Transfected

**Dilution :** WB: 1/1000-1/10000

**Molecular Weight :** Refer to figures

**Purification :** Affinity Purified

**Form :** Liquid

**Concentration :** 1 mg/ml

### Buffer:

Liquid in PBS containing 50% glycerol, 0.5% BSA and 0.02% sodium azide, pH 7.3.

### Storage:

Store at 4°C short term. Store at -20°C long term. Avoid freeze/thaw cycles.