

**MN50061**  
HSV Tag mAb



**Order** 021-34695924  
orders@ab-mart.com  
**Support** 400-6123-828  
support1@ab-mart.com  
**Web** www.ab-mart.com.cn

☐ 50ul;100ul;

### Background:

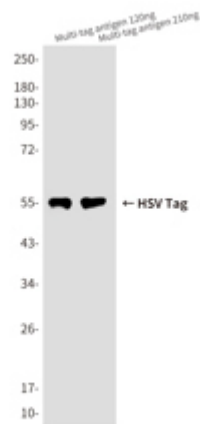
The HSV (herpes simplex virus) epitope tag is frequently engineered onto the N- or C- terminus of a protein of interest so that the tagged protein can be analyzed and visualized using immunochemical methods. The recognized HSV peptide epitope represents the amino acid sequence QPELAPEDPED.

**Alternative Names :** HSV epitope tag; QPELAPEDPED tag

**Source :** Mouse

### Application

WB



Western blot analysis of HSVtag in Multitag antigen 120ng, Multitag antigen 210ng lysates using HSVtag antibody.

**Clonality :** Monoclonal Antibody

**Isotype :** IgG1

**Immunogen :** Synthetic Peptide of HSV-Tag

**Reactivity :** Transfected

**Dilution :** WB: 1/1000-1/10000

**Molecular Weight :** Refer to figures

**Purification :** Affinity Purified

**Form :** Liquid

**Concentration :** 1 mg/ml

### Buffer:

Liquid in PBS containing 50% glycerol, 0.5% BSA and 0.02% sodium azide, pH 7.3.

### Storage:

Store at 4°C short term. Store at -20°C long term. Avoid freeze/thaw cycles.