

TN23613

beta Actin Rabbit mAb

Abmart

Order 021-34695924
orders@ab-mart.com
Support 400-6123-828
support1@ab-mart.com
Web www.ab-mart.com.cn

□ 50ul;100ul;

Background:

beta-Actin is one of six different actin isoforms that have been identified. The actin molecules found in cells of various species and tissues tend to be very similar in their immunological and physical properties. Therefore, Antibodies against beta-Actin are useful as loading controls for Western Blotting. However it should be noted that levels of beta-Actin may not be stable in certain cells. For example, expression of beta-Actin in adipose tissue is very low and therefore it should not be used as loading control for these tissues.

Gene Name : ACTB

Alternative Names:

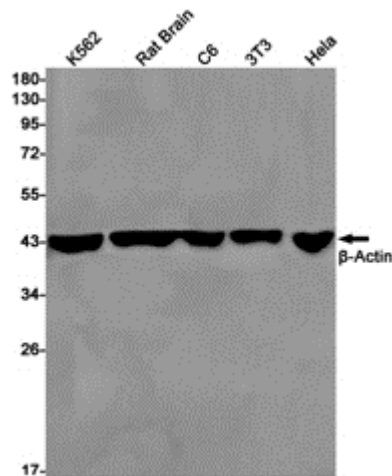
ACTIN; ACTB; BETA-ACTIN; beta actin; actin beta

Uniprot : P60709

Source : Rabbit

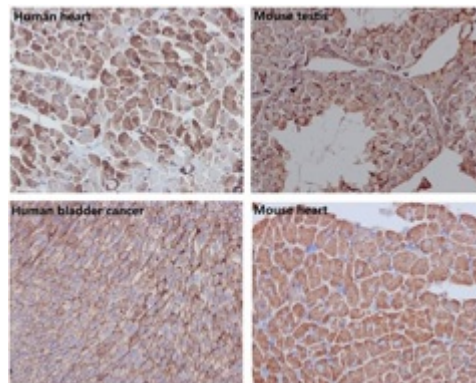
Application

WB



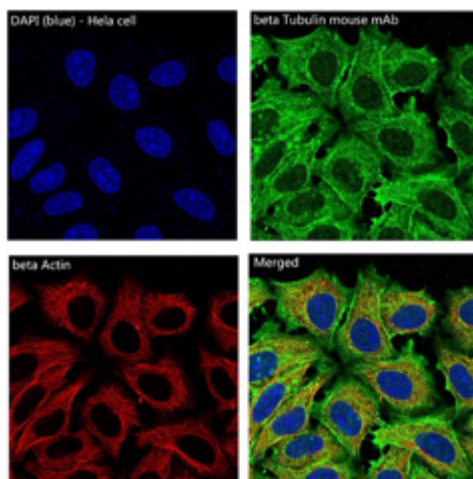
Western blot analysis of beta Actin in K562, rat Brain, C6, 3T3, HeLa lysates using beta Actin antibody.

IHC



Immunohistochemistry analysis of paraffin-embedded (1) Human heart; (2) mouse testis; (3) Human bladder cancer; (4) mouse heart using beta Actin antibody. High-pressure and temperature Sodium Citrate pH 6.0 was used for antigen retrieval.

IF



Immunofluorescence analysis of beta Actin in HeLa using beta Actin antibody.

Clonality : Monoclonal Antibody

Isotype : IgG

Immunogen : A synthetic peptide of human beta Actin

Reactivity : Human,Mouse,Rat

Dilution:

WB: 1/5000-1/10000 IHC: 1/50-1/200 IF: 1/100-1/200

Molecular Weight:

Calculated MW: 42 kDa; Observed MW: 42 kDa

Purification : Affinity Purified

Form : Liquid

Concentration : 0.3 mg/ml

Buffer:

50mM Tris-Glycine(pH 7.4), 0.15M NaCl, 40% Glycerol, 0.01% Sodium azide and 0.05% BSA

Storage:

Store at 4°C short term. Store at -20°C long term. Avoid freeze/thaw cycles.