

**TN25641**  
**S Tag Rabbit mAb**



**Order** 021-34695924  
orders@ab-mart.com  
**Support** 400-6123-828  
support1@ab-mart.com  
**Web** www.ab-mart.com.cn

50ul;100ul;

**Background:**

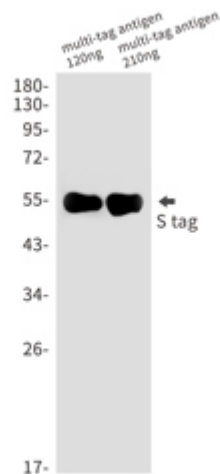
S tag is an epitope tag composed of a 15 residue peptide, KETAAKFERQHMS, derived from the pancreatic ribonuclease A.

**Alternative Names :** KETAAKFERQHMS tag

**Source :** Rabbit

**Application**

WB



Western blot analysis of S tag in multitag antigen 120ng, multitag antigen 210ng lysates using S Tag antibody.

**Clonality :** Monoclonal Antibody

**Isotype :** IgG

**Immunogen :** A synthetic peptide of S tag

**Reactivity :** Transfected

**Dilution :** WB: 1/1000-1/10000

**Molecular Weight :** Refer to figures

**Purification :** Affinity Purified

**Form :** Liquid

**Concentration :** 0.3 mg/ml

**Buffer:**

50mM Tris-Glycine(pH 7.4), 0.15M NaCl, 40% Glycerol, 0.01% Sodium azide and 0.05% BSA

**Storage:**

Store at 4°C short term. Store at -20°C long term. Avoid freeze/thaw cycles.