

**MHH8663**

Recombinant Human SARS coronavirus Spike glycoprotein(S), partial (Active)



1mg;100ug;20ug

<b>Order</b>	021-34695924 orders@ab-mart.com
<b>Support</b>	400-6123-828 support1@ab-mart.com
<b>Web</b>	www.ab-mart.com.cn

**Purity :** Greater than 95% as determined by SDS-PAGE.

**Endotoxin :** Less than 1.0 EU/ug as determined by LAL method.

**Biological Activity:**

① Measured by its binding ability in a functional ELISA. Immobilized SARS-CoV S-RBD at 2 µg/ml can bind Paguma larvata ACE2 (CSB-MP684964PAL), the EC50 is 5.056-7.559 ng/ml. ② Measured by its binding ability in a functional ELISA. Immobilized SARS-CoV S-RBD at 5 µg/ml can bind human ACE2 (CSB-MP866317HU), the EC50 is 7.941-10.49 ng/ml.

**Uniprot ID :** P59594

**Organism:**

Human SARS coronavirus (SARS-CoV) (Severe acute respiratory syndrome coronavirus)

**Host :** Mammalian cell

**Mol.Wt. :** 30 kDa

**Expression Region :** 306-527aa

**Tag Info :** N-terminal 10xHis-tagged and C-terminal Myc-tagged

**Form :** Lyophilized powder

**Buffer:**

Lyophilized from a 0.2 µm filtered 20 mM Tris-HCl, 0.5 M NaCl, 6% Trehalose, pH 8.0

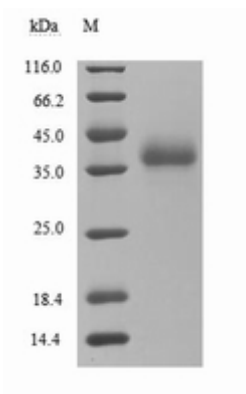
**Reconstitution:**

We recommend that this vial be briefly centrifuged prior to opening to bring the contents to the bottom. Please reconstitute protein in deionized sterile water to a concentration of 0.1-1.0 mg/mL. We recommend to add 5-50% of glycerol (final concentration) and aliquot for long-term storage at -20°C/-80°C. Our default final concentration of glycerol is 50%. Customers could use it as reference.

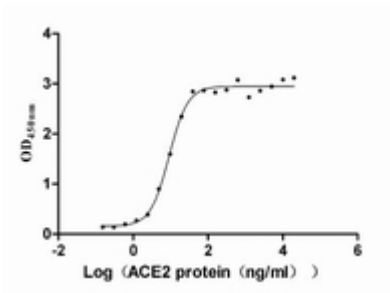
**Notes :** Partial

**Lead Time :** 3-7 business days

**Images:**

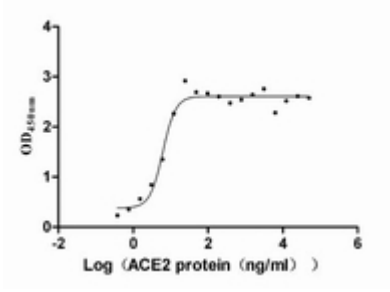


(Tris-Glycine gel) Discontinuous SDS-PAGE (reduced) with 5% enrichment gel and 15% separation gel.



**Activity**

Measured by its binding ability in a functional ELISA. Immobilized SARS-CoV S-RBD at 2 µg/ml can bind Paguma larvata ACE2 (CSB-MP684964PAL), the EC<sub>50</sub> is 5.056-7.559 ng/ml.



**Activity**

Measured by its binding ability in a functional ELISA. Immobilized SARS-CoV S-RBD at 5 µg/ml can bind human ACE2 (CSB-MP866317HU), the EC<sub>50</sub> is 7.941-10.49 ng/ml.