

**MHH8724**

**Recombinant Horse Prolactin(PRL)**



1mg;100ug;20ug

<b>Order</b>	021-34695924 orders@ab-mart.com
<b>Support</b>	400-6123-828 support1@ab-mart.com
<b>Web</b>	www.ab-mart.com.cn

**Purity :** Greater than 85% as determined by SDS-PAGE.

**Gene Names :** PRL

**Uniprot ID :** P12420

**Organism :** Equus caballus (Horse)

**Host :** Mammalian cell

**Mol.Wt. :** 51.9

**Expression Region :** 31-229aa

**Tag Info :** C-terminal hFc-tagged

**Form :** Liquid or Lyophilized powder

**Buffer:**

If the delivery form is liquid, the default storage buffer is Tris/PBS-based buffer, 5%-50% glycerol.

If the delivery form is lyophilized powder, the buffer before lyophilization is Tris/PBS-based buffer, 6% Trehalose, pH 8.0.

**Reconstitution:**

We recommend that this vial be briefly centrifuged prior to opening to bring the contents to the bottom. Please reconstitute protein in deionized sterile water to a concentration of 0.1-1.0 mg/mL. We recommend to add 5-50% of glycerol (final concentration) and aliquot for long-term storage at -20°C/-80°C. Our default final concentration of glycerol is 50%. Customers could use it as reference.

**Storage:**

The shelf life is related to many factors, storage state, buffer ingredients, storage temperature and the stability of the protein itself.

Generally, the shelf life of liquid form is 6 months at -20°C/-80°C. The shelf life of lyophilized form is 12

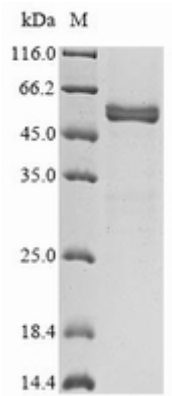
months at -20°C/-80°C.

**Notes:**

Repeated freezing and thawing is not recommended. Store working aliquots at 4°C for up to one week.

**Lead Time :** 3-7 business days

**Images:**



(Tris-Glycine gel) Discontinuous SDS-PAGE (reduced) with 5% enrichment gel and 15% separation gel.